



# **WARRIGAL LIMOUSINS** Reduction Sale

**Saturday 28th January 2023**

On Property - 346 Wherrol Flat Road, Wingham, NSW



# ... Champions Breed Champions...







# **Warrigal Limousins Reduction Sale**

**'QUALITY OVER QUANTITY'**

**3 IN 1 PACKAGES - COWS AND CALVES - PTIC COWS AND HEIFERS  
SHOW PROSPECT HEIFERS - YEARLING BULLS - GENETIC PACKAGES**

**Commencing at 12pm - Saturday 28th January 2023**

**On property, 346 Wherrol Flat Rd,  
WINGHAM, NSW**

**Inspections available from 10am**

**Paul & Janelle Relf  
Phone: 0427 915 152  
Email: rachel.relf@hotmail.com**

## **AGENT DETAILS**

**RAY WHITE DORRIGO BELLINGEN**  
Tim Bayliss - Livestock Manager  
0439 009 414

Hannah Ryan (office) - Livestock Administration  
02 6657 1777

Phone bidding can be arranged by request. Please contact agents prior to sale to do so.  
Sale will be interfaced with



Supplementary sheet will be available on sale day with all relevant updates.



# RAY WHITE RURAL

## DORRIGO BELLINGEN

- Prime Cattle Sales conducted fortnightly
- Annual Feature Weaner Sales
- Feedlot & Abattoir Sales
- Paddock Sales
- AuctionsPlus
- Clearance/Machinery Sales
- Residential Real Estate Sales
- Rural & Lifestyle Real Estate Sales



Tim leads the livestock department at Ray White Rural Dorrigo and has been since May 2016, with many years' experience prior to coming to Ray White. His initial involvement with the Limousin breed kicked off in 1988 and now operates a small Limousin stud and commercial herd with partner Kerry and daughters Bethany and Erica.

He has a wealth of stud stock knowledge, firstly becoming a member of the Limousin society in 1991 after stints at Limousin studs in Victoria and overseas in both Canada and America.

Tim has exhibited many stud Limousins and Limousin steers at Royal shows all over Australia and has also judged this breed at the Limousin National and Limousin feature shows at the Sydney Royal.

In later years a focus on the commercial side, exhibiting pure bred and cross bred led steers.

With Tim's beef industry and Limousin breed knowledge along with his livestock agency and marketing skills, he is proud to be supporting the Relf family as the selling agent for the Warrigal Limousin Reduction Sale.

### **Dorrigo**

40 Hickory Street, Dorrigo NSW 2453  
02 6657 1777

### **Bellingen**

19 Hyde Street, Bellingen NSW 2453  
02 6655 1123

### **Tim Bayliss**

Livestock Manager  
0439 009 414

### **Hannah Ryan (office)**

Livestock Administration  
02 6657 1777

**RayWhite**



# *Warrigal Limousins Reduction Sale*

Welcome to our Reduction Sale. With 16 years of breeding, we are excited to be here and extremely proud to showcase the very best that Warrigal has to offer. We will only be retaining Mandayen Wynne D1122 who we purchased in 2009. Rachel and Ryan will continue with their small herd under the Warrigal banner. There are a few cow lines that we have built on, being Wynne, Caviar, Foxy, Nicky and Krystal. With the continued interest in our breeding program and increased demand for modern genetics, we believe now is the right time to take the next step back and enjoy the next chapter of our lives, slow down and go more commercially focused. Our sale draft results from ongoing selection pressure on our females to have structural soundness, docility, performance and most important the ability to milk.

Having been fortunate enough to have success in the show ring winning sire's progeny group at Sydney Royal in 2012, Warrigal Levi crowned Grand Champion Steer in 2016. Then in 2018 Grand Champion Limousin Female Caviar L4, 2019 Grand Champion Limousin Female with Foxy Lady M22 who are both in the sale. Also, numerous broad ribbons at EKKA.

We strive to sell cattle who will breed on for their new owners. From proven breeders down to the 14 unjoined potential show heifers are a result of targeted joining to achieve specific breeding for our herd. Also, on offer will be 6 powerful young sire prospects. We are also excited to offer genetic packages which will include 25 embryos from leading donors plus a variety of semen.

If you would like to inspect the cattle prior to the sale we will be hosting an open day on the 7th January 2023 from 10am to 2pm. If you wish to inspect cattle via an appointment, we are more than happy to show you around and assist with your selection process.

Sale day is on Saturday 28th January 2023. Cattle will be penned by 10am ready for inspection. The sale will start at 12noon on farm. Alternatively, those who cannot attend the sale day can bid from home via Auction Plus.

Kind regards,

*Paul & Janelle Relf*





# SALE INFORMATION

**INSPECTIONS:** All lots will be available for inspection from 10am on sale day. Prior inspections can be arranged via appointment. Please contact Paul Relf on 0427 915 152 or sales agent, Tim Bayliss on 0439 009 414. All sale lots will have photos and video footage available. This can be viewed online through AuctionsPlus.

**SALE FORMAT:** Our reduction sale will be conducted live on property as well as being interfaced with AuctionsPlus online.

Mobile phone service will be available sale day if you require an agent to representative to bid on your behalf. Please contact the selling agents to arrange prior to sale day.

**SALE REBATE:** A rebate of 3% is payable to all outside agents who introduce their clients in writing prior to sale day and/or accompany them, and settle within 7 days. A rebate of 1% is payable to all settling agents, and settle within 7 days.

**HERD HEALTH:** All sale lots will be vet inspected for pregnancy status, reproductive soundness and semen tested by Taree Veterinary Hospital. All lots have been vaccinated with 7-in-1, drenched with Cydectin Pour on and Multimin Evolution.

**SALE DAY SAFETY:** All lots will be penned and available for viewing on sale day. Persons enter the sale pens at their own risk, and no prams or children under 15 years are to enter sale pens.

**TRANSFERS:** All animals are registers with the Australian Limousin Breeders Society. Buyers that require transfer or registration for animals purchased should indicate this on buyers instruction sheet.

**INTERSTATE PURCHASES:** We will hold stock for interstate purchasers until necessary tests and health documents have been completed.

**INSURANCE:** Purchases become the responsibility of the buyer at the fall of the hammer. While all care will be taken by the vendors, we recommend buyers insure their purchases. Please contact the selling agent to arrange insurance.

**TERMS AND CONDITIONS OF SALE:** Agents will display their terms and conditions of sale on the day of the sale.

**BUYER NUMBER SYSTEM:** Buyer bid card and number system will be used on the day. Please register with on site agent conducting the sale or online through AuctionsPlus.

**GST (GOODS AND SERVICES TAX):** All lots sold are GST exclusive. As outlined in the agents terms and conditions, GST will be added on to the auction purchase price upon invoicing.

**CATERING:** Complementary morning tea, lunch and refreshments will be available on site.

**TRANSPORT:** Please fill out buyers instruction slip (at back of catalogue) prior to leaving, as no verbal instructions will be accepted for the purposes of the agents coordinating transfers.

Delivery can be arranged 29th January 2023. No loading of any cattle on sale day. Warrigal does not have facilities for loading trailers. Live lots are to be picked up by mid-February. We will endeavour to assist with transport to central points to ensure you receive your purchases in the most cost-effective manner for you.

**DISCLAIMER:** People entering upon this property for any purpose whatsoever including attendance at cattle auction and open day do so at their own risk. While all care has been taken to ensure that information in this catalogue. We take no responsibility for any mistakes and further actions taken by any parting resulting from any mistake.

**ACCOMMODATION:**

Golf Club Motor Inn  
32 Country Club Drive  
Wingham NSW 2429  
02 6553 0300

Wingham Motel  
13 Bent St  
Wingham NSW 2429  
02 6553 4295





# Lot 1

## WARRIGAL WYNNES EXCEPTION K27 (B) (PF)



IDENT JPRPK27  
 DOB 24/10/2014  
 COLOUR Black  
 HORN Horned



FLEMINGTON BONANZA B6 (P) (PF)  
 Sire: FLEMINGTON EXCEPTION E19 (PN) (AA)  
 FLEMINGTON UNREAL (PN)

WULFS NOBEL PRIZE 3861N (HP\*) (B) (PN) (AA)  
 Dam: MANDAYEN POLLED WYNNE D1122 (P) (B) (PF)  
 MANDAYEN POLLED WYNNE (P) (PN)

	CED	DTRS	GL	BW	200	400	600	MCW	MILK	SS	CW	EMA	RIB	RUMP	RBY	IMF	DOC
EBV	+0.3	-0.8	+0.4	+1.2	+14	+32	+39	+35	+13	+0.4	+33	+3.2	-1.0	-1.6	+2.3	-0.4	+44
Acc	53%	49%	72%	75%	72%	70%	69%	55%	68%	52%	54%	42%	51%	50%	46%	44%	71%

**Comments:** This is what we strive to breed here at Warrigal. From the matron herself, Wynne and sired by Flemington Exception E19. Her full brother, LeBron is still top dog at Alexander Downs. Her cracking black polled bull calf is no slouch. Our first calf by Ulster 1 Quarterback. Daughter, P4 sells as lot 2. AI bred 28/10/22 to Balamore Endeavor for a black, polled calf.

Purchaser: \_\_\_\_\_ Price: \_\_\_\_\_

# Lot 2

## WARRIGAL WYNNES DERBY P4 (P) (B) (PF)



IDENT JPRPP4  
 DOB 10/02/2018  
 COLOUR Black  
 HORN Polled



KAJO RESPONDER 120R (P) (2B) (PN)  
 Sire: RPY PAYNES DERBY 46Z (HP\*) (B) (PN) (AA)  
 IVY'S POLLED PRINCESS 1P (HP\*) (PN)

FLEMINGTON EXCEPTION E19 (PN) (AA)  
 Dam: WARRIGAL WYNNES EXCEPTION K27 (B) (PF)  
 MANDAYEN POLLED WYNNE D1122 (P) (B) (PF)

	CED	DTRS	GL	BW	200	400	600	MCW	MILK	SS	CW	EMA	RIB	RUMP	RBY	IMF	DOC
EBV	-2.3	-0.2	-0.7	+1.9	+23	+44	+56	+55	+14	+1.3	+40	+3.3	-0.9	-1.2	+2.1	-0.2	+18
Acc	48%	43%	63%	73%	69%	68%	71%	57%	59%	50%	54%	39%	53%	51%	45%	42%	65%

**Comments:** Here's a powerhouse daughter of the previous lot. These genetics are a great combination of added power but still retaining softness all rolled up with high milk. She has the runs on the board with her first calf, R8 being second top priced bull at the National Show & Sale. Her second calf, S12 lot 50 is a real standout. AI bred 25/09/2022 to New Day Noble-Prize N22 who's progeny excelled at the Southern Cross Sale.

Purchaser: \_\_\_\_\_ Price: \_\_\_\_\_



# Lot 3

## WARRIGAL WYNNES SHADOW S3 (HP\*) (HB\*) (PN) (AA)



IDENT JPRPS3  
 DOB 09/04/2021  
 COLOUR Homo. Black (by DNA test)  
 HORN Homo. Polled (by DNA test)



Sire: RPY PAYNES BEAST 25B (P) (2B) (PU) WULFS NOBEL PRIZE 3861N (HP\*) (B) (PN) (AA)  
 RPY PAYNES DILLINGER 43D (HP\*) (HB\*) (PN) (AC) Dam: MANDAYEN POLLED WYNNE D1122 (P) (B) (PF)  
 HSF ZENA (P) (B) (PU) MANDAYEN POLLED WYNNE (P) (PN)

	CED	DTRS	GL	BW	200	400	600	MCW	MILK	SS	CW	EMA	RIB	RUMP	RBY	IMF	DOC
EBV	+0.6	-0.1	-2.3	+0.6	+19	+38	+45	+45	+14	+0.9	+34	+3.1	-0.2	-0.1	+1.2	+0.2	+55
Acc	36%	31%	58%	63%	58%	55%	54%	40%	39%	34%	38%	26%	29%	28%	27%	26%	51%

**Comments:** Wow, this heifer has donor written all over her. With the demand and popularity for black Limousin cattle increasing and for the stud breeder looking for homo polled and homo black genetics, this Dillinger daughter the heifer for you. A family favourite with a huge future. S3 is a terrific example of the modern day Limousin and has been a standout since birth. Such a easy doing heifer with some of the most predictable and exciting genetics. Class winner under 12 months Sydney Royal, Supreme Exhibit Taree Show and Buledelah Show. AI bred 11/09/22 to Balamore Gryphon for a homo polled and black calf

Purchaser: \_\_\_\_\_ Price: \_\_\_\_\_

# Lot 4

## MANDAYEN STAR P6 (HP\*) (B) (PN) (AA)



IDENT MDNPP6  
 DOB 06/05/2018  
 COLOUR Black  
 HORN Homo. Polled (by DNA test)



CALF AT FOOT

Sire: WULFS WILLARD 5115W (2P) (B) (PN) HUNT MR JOCK 44J (P) (B) (PN) (AA)  
 WULFS COMPLIANT K687C (2P) (B) (PN) (AA) Dam: MANDAYEN STARR E1410 (P) (B) (PF)  
 WULFS SOLOIST 6284S (HP\*) (R) (PU) MANDAYEN STARR (PN)

	CED	DTRS	GL	BW	200	400	600	MCW	MILK	SS	CW	EMA	RIB	RUMP	RBY	IMF	DOC
EBV	+1.3	+5.1	-1.9	+0.8	+23	+33	+46	+44	+13	+0.6	+36	+4.2	+0.5	+0.8	+0.5	+0.4	+53
Acc	50%	45%	66%	74%	70%	68%	68%	56%	56%	57%	53%	42%	50%	49%	44%	44%	65%

**Comments:** On a visit to Mandayen Limousins we couldn't resist in purchasing P6 as a 12 month old heifer, Damian did take some convincing. Her dam E1410 was a high seller purchased by Toebelle Limousins. P6 has the blend of old school power of STARR and the high milking, positive fat and IMF that Wulfs Compliant brings. Her August born homo polled heifer calf is a reflection of this and a real standout. AI bred 10/11/22 to RUNL Xtra Loyal.

Purchaser: \_\_\_\_\_ Price: \_\_\_\_\_



# Lot 5

## WARRIGAL GOLDEN CAVIAR L4 (P) (PN) (AA)



IDENT JPRPL4  
 DOB 04/03/2015  
 COLOUR Apricot  
 HORN Heterozygous Polled by DNA

CALF AT FOOT



MANDAYEN VISION C1054 (HP\*) (B) (PF) (AA)  
**Sire: WARRIGAL HIGH VISION (P) (PF) (AA)**  
 MANDAYEN POLLED WYNNE D1122 (P) (B) (PF)

HUNT MR JOCK 44J (P) (B) (PN) (AA)  
**Dam: WARRIGAL GOLDEN CAVIAR (P) (PF)**  
 MANDAYEN STARR (PN)

	CED	DTRS	GL	BW	200	400	600	MCW	MILK	SS	CW	EMA	RIB	RUMP	RBY	IMF	DOC
<b>EBV</b>	<b>-1.2</b>	<b>+6.9</b>	<b>-1.6</b>	<b>+2.5</b>	<b>+28</b>	<b>+52</b>	<b>+69</b>	<b>+68</b>	<b>+12</b>	<b>+1.1</b>	<b>+48</b>	<b>+4.2</b>	<b>-0.1</b>	<b>-0.1</b>	<b>+1.3</b>	<b>0.0</b>	<b>+67</b>
Acc	50%	44%	59%	71%	68%	68%	66%	54%	63%	48%	53%	40%	46%	45%	42%	41%	68%

**Comments:** The first thing that comes to mind is UDDER PERFECTION. L4 excelled on the show circuit winning Grand Champion heifer at the Limousin Youth Show, Brisbane Royal with Junior Champion then onto Sydney with Grand Champion Limousin Female. Also representing Australia in the Miss World Competition finishing as Reserve Champion. Sells with an October born apricot bull calf sired by Flemington Quiet Achiever. Three daughters sell in sale as lots 7,8, 9 and a bull as lot 48. Left unjoined ready for the Donor pen.

Purchaser: \_\_\_\_\_ Price: \_\_\_\_\_

# Lot 6

## WARRIGAL GOLDEN CAVIAR P18 (HP\*) (PF)



IDENT JPRPP18  
 DOB 12/06/2018  
 COLOUR Apricot  
 HORN Homo. Polled (by DNA test)



WULFS WILLARD 5115W (2P) (B) (PN)  
**Sire: WULFS COMPLIANT K687C (2P) (B) (PN) (AA)**  
 WULFS SOLOIST 6284S (HP\*) (R) (PU)

HUNT MR JOCK 44J (P) (B) (PN) (AA)  
**Dam: WARRIGAL GOLDEN CAVIAR (P) (PF)**  
 MANDAYEN STARR (PN)

	CED	DTRS	GL	BW	200	400	600	MCW	MILK	SS	CW	EMA	RIB	RUMP	RBY	IMF	DOC
<b>EBV</b>	<b>+0.8</b>	<b>+4.7</b>	<b>-1.0</b>	<b>+1.4</b>	<b>+24</b>	<b>+39</b>	<b>+52</b>	<b>+55</b>	<b>+11</b>	<b>+1.0</b>	<b>+40</b>	<b>+4.6</b>	<b>+0.4</b>	<b>+0.7</b>	<b>+0.6</b>	<b>+0.4</b>	<b>+61</b>
Acc	47%	44%	58%	62%	59%	59%	59%	49%	56%	53%	49%	41%	47%	46%	42%	42%	63%

**Comments:** Genetically a full sister to lot 4. Another predictable, productive and super consistent STARR/Compliant joining. Check out her data spread. Top 10% for calving easy, milk, carcase weight, eye muscle, rib and rump fats, IMF plus docility +61. AI bred 25/09/22 to Myers Western Star for a homo polled calf.

Purchaser: \_\_\_\_\_ Price: \_\_\_\_\_



# Lot 7

## WARRIGAL CAVIAR N14 (B)(PU)



IDENT JPRPN14  
 DOB 04/10/2017  
 COLOUR Black  
 HORN Horned



MANALI FICTION F53 (P) (HB\*) (PN) (AA)  
**Sire: ANGLEDALE KASHABULL (P) (B) (PU)**  
 OAKVALE ELEGANT (P) (B) (PU)

WARRIGAL HIGH VISION (P) (PF) (AA)  
**Dam: WARRIGAL GOLDEN CAVIAR L4 (P) (PN) (AA)**  
 WARRIGAL GOLDEN CAVIAR (P) (PF)

	CED	DTRS	GL	BW	200	400	600	MCW	MILK	SS	CW	EMA	RIB	RUMP	RBY	IMF	DOC
<b>EBV</b>	<b>+1.6</b>	<b>+3.7</b>	<b>-1.1</b>	<b>+2.2</b>	<b>+25</b>	<b>+43</b>	<b>+65</b>	<b>+64</b>	<b>+13</b>	<b>+1.3</b>	<b>+43</b>	<b>+2.9</b>	<b>-0.1</b>	<b>-0.2</b>	<b>+1.1</b>	<b>-</b>	<b>+50</b>
Acc	37%	29%	44%	63%	61%	63%	61%	47%	55%	36%	46%	25%	28%	27%	26%	-	60%

**Comments:** Natural daughter of lot 5. A real no fuss quiet achiever who just gets the job done. Calves are always in the top end for growth. Daughter at lot 42 is just another example. AI bred 21/05/2022 to RPY Paynes Derby.

Purchaser: \_\_\_\_\_ Price: \_\_\_\_\_

# Lot 8

## WARRIGAL CAVIAR Q20 (HP\*)(B)(PF)(2A)



IDENT JPRPQ20  
 DOB 01/05/2019  
 COLOUR Black  
 HORN Homo. Polled (by DNA test)



MANDAYEN FORTUNE F1606 (HP\*) (B) (PN)  
**Sire: MANDAYEN FORTUNE M190 (P) (HB\*) (PN) (AA)**  
 MANDAYEN JILL F1646 (P) (B) (PF)

WARRIGAL HIGH VISION (P) (PF) (AA)  
**Dam: WARRIGAL GOLDEN CAVIAR L4 (P) (PN) (AA)**  
 WARRIGAL GOLDEN CAVIAR (P) (PF)

	CED	DTRS	GL	BW	200	400	600	MCW	MILK	SS	CW	EMA	RIB	RUMP	RBY	IMF	DOC
<b>EBV</b>	<b>-2.8</b>	<b>+4.4</b>	<b>-0.1</b>	<b>+3.0</b>	<b>+28</b>	<b>+46</b>	<b>+62</b>	<b>+57</b>	<b>+10</b>	<b>+1.2</b>	<b>+38</b>	<b>+2.9</b>	<b>+0.2</b>	<b>+0.3</b>	<b>+0.5</b>	<b>+0.2</b>	<b>+67</b>
Acc	38%	33%	46%	68%	63%	64%	67%	52%	49%	40%	48%	31%	36%	35%	33%	32%	56%

**Comments:** Homo polled and black. A young cow with a big future. Strength in the pedigree. Black heifer calf born 12/10/22 sired by RPY Paynes Derby. Her first daughter sells at lot 38. Check supplementary sheet for joining.

Purchaser: \_\_\_\_\_ Price: \_\_\_\_\_



# Lot 9

## WARRIGAL CAVIAR Q11 (P)(B)(PF)(2A)



IDENT JPRPQ11  
 DOB 10/03/2019  
 COLOUR Black  
 HORN Heterozygous Polled by DNA



WULFS ZIPLOCK N922Z (HP\*) (PU)  
**Sire: LFLC DENVER 857D (HP\*) (HB\*) (PN) (AA)**  
 LFLC ANNABELLE 857A (P) (B) (PU)

WARRIGAL HIGH VISION (P) (PF) (AA)  
**Dam: WARRIGAL GOLDEN CAVIAR L4 (P) (PN) (AA)**  
 WARRIGAL GOLDEN CAVIAR (P) (PF)

	CED	DTRS	GL	BW	200	400	600	MCW	MILK	SS	CW	EMA	RIB	RUMP	RBY	IMF	DOC
<b>EBV</b>	<b>-0.2</b>	<b>+4.6</b>	<b>-4.8</b>	<b>+2.5</b>	<b>+31</b>	<b>+57</b>	<b>+70</b>	<b>+62</b>	<b>+10</b>	<b>+1.5</b>	<b>+44</b>	<b>+3.7</b>	<b>-0.1</b>	<b>-0.1</b>	<b>+1.1</b>	<b>+0.1</b>	<b>+67</b>
Acc	43%	36%	55%	62%	59%	62%	59%	45%	42%	49%	47%	35%	42%	41%	37%	37%	59%

**Comments:** Q11 has grown into a beautiful highly docile cow with EBV's suit. Well over breed average for all growth traits. AI bred 8/06/22 to RPY Paynes Dillinger for a black polled calf.

Purchaser: \_\_\_\_\_ Price: \_\_\_\_\_

# Lot 10

## WARRIGAL GOLDEN CAVIAR Q35 (P)(PN)(AA)



IDENT JPRPQ35  
 DOB 05/11/2019  
 COLOUR Apricot  
 HORN Heterozygous Polled by DNA



RPY PAYNES DERBY 46Z (HP\*) (B) (PN) (AA)  
**Sire: WARRIGAL NIGHT RIDER N12 (HP\*) (PN) (AA)**  
 MANDAYEN POLLED ULTRA C897 (HP\*) (PF)

HUNT MR JOCK 44J (P) (B) (PN) (AA)  
**Dam: WARRIGAL GOLDEN CAVIAR (P) (PF)**  
 MANDAYEN STARR (PN)

	CED	DTRS	GL	BW	200	400	600	MCW	MILK	SS	CW	EMA	RIB	RUMP	RBY	IMF	DOC
<b>EBV</b>	<b>-0.4</b>	<b>+5.3</b>	<b>-1.9</b>	<b>+2.1</b>	<b>+27</b>	<b>+49</b>	<b>+63</b>	<b>+65</b>	<b>+8</b>	<b>+1.6</b>	<b>+43</b>	<b>+4.0</b>	<b>0.0</b>	<b>+0.1</b>	<b>+1.2</b>	<b>+0.1</b>	<b>+22</b>
Acc	41%	39%	51%	66%	64%	65%	69%	56%	51%	44%	52%	34%	37%	36%	35%	33%	57%

**Comments:** From the foundation dam, Golden Caviar. The Caviar family has a name for producing show stopping females. Her first born T4 has made his way to the keeper pen. Departured with Ulster 1 Quarterback 11/06/22. PTIC.

Purchaser: \_\_\_\_\_ Price: \_\_\_\_\_



# Lot 11

## WARRIGAL GOLDEN CAVIAR R16 (P)(PF)



IDENT JPRPR16  
 DOB 04/11/2020  
 COLOUR Apricot  
 HORN Polled



Sire: RPY PAYNES DERBY 46Z (HP\*) (B) (PN) (AA)  
 WARRIGAL NIGHT RIDER N12 (HP\*) (PN) (AA)  
 MANDAYEN POLLED ULTRA C897 (HP\*) (PF)

Dam: HUNT MR JOCK 44J (P) (B) (PN) (AA)  
 WARRIGAL GOLDEN CAVIAR (P) (PF)  
 MANDAYEN STARR (PN)

	CED	DTRS	GL	BW	200	400	600	MCW	MILK	SS	CW	EMA	RIB	RUMP	RBY	IMF	DOC
EBV	+1.5	+5.6	-2.5	+1.7	+27	+50	+63	+67	+8	+1.7	+46	+4.2	-0.1	0.0	+1.2	+0.1	+29
Acc	41%	39%	51%	65%	62%	63%	66%	54%	48%	44%	50%	34%	37%	36%	35%	33%	55%

**Comments:** Full sister to previous lot. Another maternal powerhouse daughter to the Caviar line. Tremendous growth plus beautiful udder quality with a great data set. Maternal sister to lot 5, 6, 10. Paddock mated 12/10/222 to Flemington Liftoff.

Purchaser: \_\_\_\_\_ Price: \_\_\_\_\_

# Lot 12

## WARRIGAL FOXY LADY M22 (2P)(PU)



IDENT JPRPM22  
 DOB 13/11/2016  
 COLOUR Apricot  
 HORN Homo. Polled (by Pedigree)



Sire: KAJO RESPONDER 120R (P) (2B) (PN)  
 RPY PAYNES DERBY 46Z (HP\*) (B) (PN) (AA)  
 IVY'S POLLED PRINCESS 1P (HP\*) (PN)

Dam: MANDAYEN VISION C1054 (HP\*) (B) (PF) (AA)  
 WARRIGAL FOXY LADY (HP\*) (PU)  
 KIPPAX VALLEY SHESCHARMING (P) (PU)

	CED	DTRS	GL	BW	200	400	600	MCW	MILK	SS	CW	EMA	RIB	RUMP	RBY	IMF	DOC
EBV	-2.6	+0.6	-2.0	+3.0	+29	+55	+83	+83	+9	+1.2	+50	+3.7	-0.3	-0.4	+1.7	0.0	+30
Acc	48%	43%	58%	67%	66%	67%	70%	58%	60%	51%	55%	36%	40%	39%	36%	35%	68%

**Comments:** From the heart of the heard and one of the standout breeders. A beautifully structured female with a long square hip, bold rib with a stylish front end. Stella show career winning Grand Champion Limousin female 2019 Sydney Royal. First born sells as lot 13. Another purchased by Murray Sowter and Annette Barham. Will calve prior to sale to Ulster 1 Quarterback.

Purchaser: \_\_\_\_\_ Price: \_\_\_\_\_



# Lot 13

## WARRIGAL FOXY LADY Q1 (2P)(R)(PU)



IDENT JPRPQ1  
 DOB 10/01/2019  
 COLOUR Red  
 HORN Homo. Polled (by Pedigree)



Sire: **GREENWOOD CANADIAN WAYS (2P)(B)(PN)(AA)** **GREENWOOD WISTERIA LANE (HP\*)(B)(PN)**  
 Dam: **RPY PAYNES DERBY 46Z (HP\*)(B)(PN)(AA)** **WARRIGAL FOXY LADY M22 (2P)(PU)** **WARRIGAL FOXY LADY (HP\*)(PU)**

	CED	DTRS	GL	BW	200	400	600	MCW	MILK	SS	CW	EMA	RIB	RUMP	RBY	IMF	DOC
<b>EBV</b>	<b>-0.5</b>	<b>-1.6</b>	<b>-3.3</b>	<b>+2.8</b>	<b>+31</b>	<b>+55</b>	<b>+81</b>	<b>+78</b>	<b>+9</b>	<b>+1.5</b>	<b>+45</b>	<b>+3.5</b>	<b>+0.2</b>	<b>+0.4</b>	<b>+1.1</b>	<b>+0.1</b>	<b>+39</b>
Acc	38%	30%	54%	61%	60%	62%	58%	45%	44%	37%	45%	25%	30%	29%	27%	25%	59%

**Comments:** Q1 better known as Qubie, Rachel's pride and joy. A real standout, big bellied, powerful cow. The power and capacity we find in her sire Canadians Ways. A daughter was purchased by Flemington Limousins. Her second born heifer is at lot 43. AI bred 25/09/22 to New Day Noble-Prize N22.

Purchaser: \_\_\_\_\_ Price: \_\_\_\_\_

# Lot 14

## WARRIGAL NICKYS EXCEPTION K23 (P)(PF)



IDENT JPRPK23  
 DOB 04/10/2014  
 COLOUR Apricot  
 HORN Polled



CALF AT FOOT



Sire: **FLEMINGTON BONANZA B6 (P)(PF)** **FLEMINGTON EXCEPTION E19 (PN)(AA)** **FLEMINGTON UNREAL (PN)**  
 Dam: **MANDAYEN VISION C1054 (HP\*)(B)(PF)(AA)** **WARRIGAL NICKY'S VISION F11 (2P)(B)(PF)** **MANDAYEN NICKY'S PRIZE D1105 (HP\*)(B)(PF)**

	CED	DTRS	GL	BW	200	400	600	MCW	MILK	SS	CW	EMA	RIB	RUMP	RBY	IMF	DOC
<b>EBV</b>	<b>-1.2</b>	<b>0.0</b>	<b>+2.6</b>	<b>+2.5</b>	<b>+19</b>	<b>+34</b>	<b>+56</b>	<b>+53</b>	<b>+5</b>	<b>+0.2</b>	<b>+37</b>	<b>+3.0</b>	<b>-0.6</b>	<b>-1.0</b>	<b>+1.8</b>	<b>-0.2</b>	<b>+42</b>
Acc	50%	47%	68%	74%	69%	67%	67%	52%	61%	50%	51%	39%	46%	46%	42%	41%	69%

**Comments:** Nicky's Exception has earned her stripes here. Firstly, Pillow Talk an outstanding Canadian Ways daughter that was purchased by Alexander Downs. And check out her current calf, another Canadian Ways daughter who has a big future. Another daughter sells as lot 17 and two sons at lot 51 and 52. AI bred 28/10/22 to Greenwood Canadian Ways.

Purchaser: \_\_\_\_\_ Price: \_\_\_\_\_

# Lot 15

## WARRIGAL NICKY'S LADY L17 (2P)(B)(PF)



IDENT JPRPL17  
 DOB 06/11/2015  
 COLOUR Black  
 HORN Homo. Polled (by Pedigree)



MANDAYEN ENERGIZER E1338 (P) (R) (PN) (AA)  
**Sire: MANDAYEN ENERGISER H2076 (HP\*) (PF)**  
 MANDAYEN KRYSTAL B724 (P) (PF)

WULFS NOBEL PRIZE 3861N (HP\*) (B) (PN) (AA)  
**Dam: MANDAYEN NICKY'S PRIZE D1105 (HP\*) (B) (PF)**  
 LLOYD'S BLACK POLLED NICKY (P) (HB\*) (PF)

	CED	DTRS	GL	BW	200	400	600	MCW	MILK	SS	CW	EMA	RIB	RUMP	RBY	IMF	DOC
<b>EBV</b>	<b>-0.7</b>	<b>-1.1</b>	<b>+0.2</b>	<b>+2.0</b>	<b>+18</b>	<b>+26</b>	<b>+41</b>	<b>+41</b>	<b>+7</b>	<b>+1.0</b>	<b>+20</b>	<b>+2.0</b>	<b>+0.6</b>	<b>+0.7</b>	<b>+0.1</b>	<b>+0.2</b>	<b>+41</b>
Acc	49%	45%	59%	74%	71%	68%	70%	56%	64%	54%	54%	44%	50%	49%	46%	44%	69%

**Comments:** Homo polled and black with the extra horsepower that Energiser brings. Stylish front end and picture perfect udder. A son doing stud duties at Lindsay View Limousins. Daughters sell as lot 16 and 45. AI bred 8/06/22 to RPY Paynes Dillinger for a homo polled and possibly homo black calf.

Purchaser: \_\_\_\_\_ Price: \_\_\_\_\_

# Lot 16

## WARRIGAL NICKY'S FORTUNE Q21 (P)(HB\*)(PN)(AA)



IDENT JPRPQ21  
 DOB 05/05/2019  
 COLOUR Homo. Black (by DNA test)  
 HORN Heterozygous Polled by DNA



MANDAYEN FORTUNE F1606 (HP\*) (B) (PN)  
**Sire: MANDAYEN FORTUNE M190 (P) (HB\*) (PN) (AA)**  
 MANDAYEN JILL F1646 (P) (B) (PF)

MANDAYEN ENERGISER H2076 (HP\*) (PF)  
**Dam: WARRIGAL NICKY'S LADY L17 (2P) (B) (PF)**  
 MANDAYEN NICKY'S PRIZE D1105 (HP\*) (B) (PF)

	CED	DTRS	GL	BW	200	400	600	MCW	MILK	SS	CW	EMA	RIB	RUMP	RBY	IMF	DOC
<b>EBV</b>	<b>-1.8</b>	<b>+0.3</b>	<b>+0.5</b>	<b>+2.9</b>	<b>+24</b>	<b>+35</b>	<b>+56</b>	<b>+51</b>	<b>+6</b>	<b>+1.2</b>	<b>+27</b>	<b>+1.8</b>	<b>+0.6</b>	<b>+0.7</b>	<b>0.0</b>	<b>+0.3</b>	<b>+56</b>
Acc	39%	34%	46%	68%	63%	63%	67%	52%	44%	42%	48%	33%	38%	37%	35%	33%	54%

**Comments:** Homo black cow only on her second calf who is shaping up to be a future matron. Soft and stout with a beautiful udder make up. Black bull calf born 12/09/22 by Ulster 1 Quarterback. Check supplementary sheet for joining.

Purchaser: \_\_\_\_\_ Price: \_\_\_\_\_



# Lot 17

## WARRIGAL NICKYS EXCEPTION R12 (P)(PF)



IDENT JPRPR12  
 DOB 29/08/2020  
 COLOUR Apricot  
 HORN Heterozygous Polled by DNA



Sire: **WARRIGAL NIGHT RIDER N12 (HP\*) (PN) (AA)**  
 MANDAYEN POLLED ULTRA C897 (HP\*) (PF)

Dam: **WARRIGAL NICKYS EXCEPTION K23 (P) (PF)**  
 WARRIGAL NICKY'S VISION F11 (2P) (B) (PF)

	CED	DTRS	GL	BW	200	400	600	MCW	MILK	SS	CW	EMA	RIB	RUMP	RBY	IMF	DOC
<b>EBV</b>	<b>-1.3</b>	<b>-0.3</b>	<b>+0.5</b>	<b>+3.0</b>	<b>+27</b>	<b>+49</b>	<b>+74</b>	<b>+73</b>	<b>+7</b>	<b>+1.2</b>	<b>+46</b>	<b>+3.3</b>	<b>-0.6</b>	<b>-0.8</b>	<b>+1.9</b>	<b>-0.2</b>	<b>+35</b>
Acc	38%	33%	52%	67%	63%	64%	69%	53%	42%	39%	49%	28%	32%	30%	30%	27%	53%

**Comments:** R12 is no exception. An apricot who was shown successfully. Interbreed champion and crowd favourite at local show. Unfortunately lost her first calf. Plenty of stretch and capacity in this female. Will grow into a broody cow. Maternal sister to Pillow Talk. AI bred 28/10/22 to Greenwood Canadian Ways.

Purchaser: \_\_\_\_\_ Price: \_\_\_\_\_

# Lot 18

## MANDAYEN ROSEBUD L152 (P)(B)(PF)



IDENT MDNPL152  
 DOB 01/09/2015  
 COLOUR Black  
 HORN Polled



Sire: **MANDAYEN JACKAROO J2355 (HP\*) (PN) (AA)**  
 MANDAYEN JILL G1913 (P) (PF)

Dam: **MANDAYEN DURACELL D1098 (P) (B) (PN) (AA)**  
**MANDAYEN ROSEBUD J2480 (P) (B) (PF)**  
 MANDAYEN SPECIAL ROSEBUD E1462 (P) (PF)

	CED	DTRS	GL	BW	200	400	600	MCW	MILK	SS	CW	EMA	RIB	RUMP	RBY	IMF	DOC
<b>EBV</b>	<b>+7.6</b>	<b>+2.1</b>	<b>-4.9</b>	<b>0.0</b>	<b>+20</b>	<b>+30</b>	<b>+46</b>	<b>+46</b>	<b>-1</b>	<b>+0.6</b>	<b>+35</b>	<b>+3.3</b>	<b>+0.3</b>	<b>+0.4</b>	<b>+0.6</b>	<b>+0.2</b>	<b>+58</b>
Acc	50%	44%	63%	74%	71%	68%	68%	55%	64%	55%	54%	43%	52%	51%	46%	46%	68%

**Comments:** L152 was a calf on her dam when purchased from Mandayen. She has grown into a moderate but thick, easy doing cow with the ability to lay down fat which Jackaroo is renowned for. AI bred 25/09/22 to Greenwood Canadian Ways.

Purchaser: \_\_\_\_\_ Price: \_\_\_\_\_

# Lot 19

## WARRIGAL POLLED ULTRA Q (HP\*) (B) (PF)



IDENT JPRPQ31  
 DOB 25/09/2019  
 COLOUR Black  
 HORN Homo. Polled (by DNA test)



MANDAYEN FORTUNE F1606 (HP\*) (B) (PN)  
 Sire: MANDAYEN FORTUNE M190 (P) (HB\*) (PN) (AA)  
 MANDAYEN JILL F1646 (P) (B) (PF)

WULFS NOBEL PRIZE 3861N (HP\*) (B) (PN) (AA)  
 Dam: MANDAYEN POLLED ULTRA C897 (HP\*) (PF)  
 MANDAYEN X198 (P) (R) (PF)

	CED	DTRS	GL	BW	200	400	600	MCW	MILK	SS	CW	EMA	RIB	RUMP	RBY	IMF	DOC
<b>EBV</b>	<b>+0.1</b>	<b>+0.7</b>	<b>+0.1</b>	<b>+2.9</b>	<b>+27</b>	<b>+45</b>	<b>+68</b>	<b>+62</b>	<b>+8</b>	<b>+1.3</b>	<b>+38</b>	<b>+2.4</b>	<b>0.0</b>	<b>-0.1</b>	<b>+0.8</b>	<b>+0.2</b>	<b>+55</b>
Acc	41%	36%	52%	68%	65%	66%	70%	56%	49%	45%	52%	35%	38%	37%	36%	35%	58%

**Comments:** Q31 is only a young cow with a big future. Her first calf a bull has made his way to the keeper pen. Maternal brother Polled Aussie Made was top priced Limousin bull for 2020. AI bred 25/05/22 to Balamore Gryphon.

Purchaser: \_\_\_\_\_ Price: \_\_\_\_\_

# Lot 20

## MANDAYEN KYRSTAL J2411 (P) (PF)



IDENT MDNPJ2411  
 DOB 21/05/2013  
 COLOUR Apricot  
 HORN Polled



HUNT MR JOCK 44J (P) (B) (PN) (AA)  
 Sire: MANDAYEN ENERGIZER E1338 (P) (R) (PN) (AA)  
 RAMORNIE ABIGAIL U2 (P) (B) (PF)

IONESCO (PN) (AA)  
 Dam: MANDAYEN KRYSTAL B724 (P) (PF)  
 RAMORNIESPRY R020 (PF)

	CED	DTRS	GL	BW	200	400	600	MCW	MILK	SS	CW	EMA	RIB	RUMP	RBY	IMF	DOC
<b>EBV</b>	<b>-3.6</b>	<b>+0.0</b>	<b>0.0</b>	<b>+2.9</b>	<b>+24</b>	<b>+37</b>	<b>+56</b>	<b>+62</b>	<b>+10</b>	<b>+1.6</b>	<b>+27</b>	<b>+2.5</b>	<b>+0.7</b>	<b>+0.7</b>	<b>+0.1</b>	<b>+0.2</b>	<b>+44</b>
Acc	57%	54%	69%	77%	75%	72%	72%	61%	72%	61%	60%	50%	57%	56%	53%	52%	74%

**Comments:** J2411 is a real powerhouse that we expect from her pedigree. A more traditional Limousin female with the ability to lay down fat. Daughters sell at lot 21, 22 and 44. AI bred 25/09/22 to Warrigal High Vision.

Purchaser: \_\_\_\_\_ Price: \_\_\_\_\_



# Lot 21

## WARRIGAL PANDORA P10 (HP\*) (B) (PF)



IDENT JPRPP10  
 DOB 02/03/2018  
 COLOUR Black  
 HORN Homo. Polled (by DNA test)



FLEMINGTON EXCEPTION E19 (PN) (AA)  
 Sire: **WARRIGAL LEBRON L12 (P) (B) (PF)**  
 MANDAYEN POLLED WYNNE D1122 (P) (B) (PF)

MANDAYEN ENERGIZER E1338 (P) (R) (PN) (AA)  
 Dam: **MANDAYEN KRYSTAL J2411 (P) (PF)**  
 MANDAYEN KRYSTAL B724 (P) (PF)

	CED	DTRS	GL	BW	200	400	600	MCW	MILK	SS	CW	EMA	RIB	RUMP	RBY	IMF	DOC
<b>EBV</b>	<b>-1.4</b>	<b>+0.1</b>	<b>0.0</b>	<b>+2.2</b>	<b>+21</b>	<b>+38</b>	<b>+53</b>	<b>+55</b>	<b>+11</b>	<b>+1.1</b>	<b>+33</b>	<b>+3.3</b>	<b>+0.2</b>	<b>+0.1</b>	<b>+1.0</b>	<b>-0.1</b>	<b>+54</b>
Acc	39%	37%	51%	68%	64%	62%	67%	52%	53%	43%	49%	38%	52%	50%	45%	42%	59%

**Comments:** Nellies favourite cow. A sound footed, big bellied and powerfull cow that we expect from her pedigree. Her last calf T2 has made his way to the keep pen and is one of the favourite bull calves born for 2022. AI bred 21/05/22 to RPY Paynes Derby.

Purchaser: \_\_\_\_\_ Price: \_\_\_\_\_

# Lot 22

## WARRIGAL KRYSTAL Q3 (HP\*) (B) (PF)



IDENT JPRPQ3  
 DOB 21/02/2019  
 COLOUR Black  
 HORN Homo. Polled (by DNA test)



CALF AT FOOT

WULFS ZIPLOCK N922Z (HP\*) (PU)  
 Sire: **LFLC DENVER 857D (HP\*) (HB\*) (PN) (AA)**  
 LFLC ANNABELLE 857A (P) (B) (PU)

MANDAYEN ENERGIZER E1338 (P) (R) (PN) (AA)  
 Dam: **MANDAYEN KRYSTAL J2411 (P) (PF)**  
 MANDAYEN KRYSTAL B724 (P) (PF)

	CED	DTRS	GL	BW	200	400	600	MCW	MILK	SS	CW	EMA	RIB	RUMP	RBY	IMF	DOC
<b>EBV</b>	<b>+0.1</b>	<b>+1.8</b>	<b>-4.7</b>	<b>+1.4</b>	<b>+22</b>	<b>+39</b>	<b>+49</b>	<b>+46</b>	<b>+7</b>	<b>+1.5</b>	<b>+27</b>	<b>+2.7</b>	<b>+0.3</b>	<b>+0.4</b>	<b>+0.4</b>	<b>+0.2</b>	<b>+41</b>
Acc	46%	40%	69%	70%	66%	67%	65%	49%	50%	52%	50%	38%	46%	44%	40%	40%	60%

**Comments:** Only a young homo polled Denver daughter who is doing a great job on her August born apricot heifer sired by Ulster 1 Quarterback. AI bred 28/10/22 to RPY Paynes Dillinger for a homo polled and possible homo black calf.

Purchaser: \_\_\_\_\_ Price: \_\_\_\_\_

# Lot 23

## WARRIGAL KRYSTAL L11 (P)(PF)



IDENT JPRPL11  
 DOB 06/10/2015  
 COLOUR Apricot  
 HORN Polled

CALF AT FOOT



MANDAYEN ENERGIZER E1338 (P) (R) (PN) (AA)  
 Sire: MANDAYEN ENERGISER H2076 (HP\*) (PF)  
 MANDAYEN KRYSTAL B724 (P) (PF)

IONESCO (PN) (AA)  
 Dam: MANDAYEN KRYSTAL B727 (PF)  
 RAMORNIESPRY R020 (PF)

	CED	DTRS	GL	BW	200	400	600	MCW	MILK	SS	CW	EMA	RIB	RUMP	RBY	IMF	DOC
EBV	-2.2	-0.7	-0.2	+3.0	+23	+33	+49	+55	+8	+1.8	+19	+1.2	+0.7	+0.6	-0.3	+0.1	+44
Acc	52%	48%	58%	75%	71%	68%	70%	57%	62%	59%	55%	47%	53%	52%	48%	47%	65%

**Comments:** L11 a cow with added length and frame. A smooth coated cow that breeds extra power and performance. A son P3 working at Glenliam Farm Murray Greys. Black heifer calf born 02/09/22 sired by Ulster 1 Quarterback. AI bred 28/10/22 to Balamore Endeavor.

Purchaser: \_\_\_\_\_ Price: \_\_\_\_\_

# Lot 24

## WARRIGAL NEW MOON (P)(B)(PU)



IDENT JPRPN8  
 DOB 24/05/2017  
 COLOUR Black  
 HORN Heterozygous Polled by DNA



MANALI FICTION F53 (P) (HB\*) (PN) (AA)  
 Sire: ANGLEDAL E KASHABULL (P) (B) (PU)  
 OAKVALE ELEGANT (P) (B) (PU)

BILATI XAVIER (PN)  
 Dam: DONNA VALLEY POLL DAPHNE A536 (P) (PF)  
 RAMORNIE DAPHNE U15 (P) (PF)

	CED	DTRS	GL	BW	200	400	600	MCW	MILK	SS	CW	EMA	RIB	RUMP	RBY	IMF	DOC
EBV	+2.5	+1.7	-1.6	+1.6	+18	+27	+46	+44	+11	+0.9	+25	+1.1	-0.2	-0.5	+0.7	-0.1	+16
Acc	41%	36%	47%	64%	60%	60%	61%	48%	58%	58%	46%	27%	30%	29%	28%	25%	61%

**Comments:** N8 is a cow with plenty of milk and breeds calves that have extra grunt. Check out her Ulster 1 Quarterback bull calf born 25/09/22. Has two daughters in the sale, lot 25 and 35. Check supplementary sheet for joining.

Purchaser: \_\_\_\_\_ Price: \_\_\_\_\_



# Lot 25

## WARRIGAL NEW MOON Q32 (P)(B)(PU)



IDENT JPRPQ32  
 DOB 03/10/2019  
 COLOUR Black  
 HORN Polled



MANDAYEN FORTUNE F1606 (HP\*) (B) (PN)  
**Sire: MANDAYEN FORTUNE M190 (P) (HB\*) (PN) (AA)**  
 MANDAYEN JILL F1646 (P) (B) (PF)

ANGLEDALE KASHABULL (P) (B) (PU)  
**Dam: WARRIGAL NEW MOON (P) (B) (PU)**  
 DONNA VALLEY POLL DAPHNE A536 (P) (PF)

	CED	DTRS	GL	BW	200	400	600	MCW	MILK	SS	CW	EMA	RIB	RUMP	RBY	IMF	DOC
<b>EBV</b>	<b>-0.5</b>	<b>+1.7</b>	<b>-0.2</b>	<b>+2.2</b>	<b>+21</b>	<b>+31</b>	<b>+44</b>	<b>+39</b>	<b>+9</b>	<b>+1.0</b>	<b>+24</b>	<b>+1.2</b>	<b>+0.2</b>	<b>+0.2</b>	<b>+0.1</b>	<b>+0.2</b>	<b>+43</b>
Acc	34%	29%	41%	65%	61%	62%	67%	51%	41%	37%	47%	27%	31%	30%	29%	27%	54%

**Comments:** A slick coated Fortune M190 daughter and Ficton F53 on the dam side. Her dam is a fertile and productive cow going back to the Daphne line. AI bred 8/06/22 to Flemington Quiet Achiever.

Purchaser: \_\_\_\_\_ Price: \_\_\_\_\_

# Lot 26

## RED ROCK VIOLET N223 (P)(R)(PU)



IDENT PAPN223  
 DOB 08/08/2017  
 COLOUR Red  
 HORN Polled



HUNT MR JOCK 44J (P) (B) (PN) (AA)  
**Sire: MANDAYEN MR JOCK K10 (P) (R) (PF)**  
 RAMORNIE ABIGAIL U2 (P) (B) (PF)

STEVENS PROPHET (HP) (PF)  
**Dam: RED ROCK VIOLET F711 (P) (PU)**  
 PALLABAH VIOLET Z2 (P) (PU)

	CED	DTRS	GL	BW	200	400	600	MCW	MILK	SS	CW	EMA	RIB	RUMP	RBY	IMF	DOC
<b>EBV</b>	<b>-3.4</b>	<b>+1.3</b>	<b>-0.7</b>	<b>+2.3</b>	<b>+22</b>	<b>+36</b>	<b>+58</b>	<b>+60</b>	<b>+10</b>	<b>+1.5</b>	<b>+32</b>	<b>+2.7</b>	<b>+0.4</b>	<b>+0.5</b>	<b>+0.4</b>	<b>+0.2</b>	<b>+44</b>
Acc	40%	37%	49%	61%	61%	63%	61%	50%	57%	45%	50%	35%	38%	37%	35%	33%	61%

**Comments:** N223 was a calf on her dam which we purchased from the Red Rock Dispersal. We loved the consistency that Stevens Prophet was doing at Red Rock. A fleshy, moderate, easy keeping cow with a beautiful udder. Daughter sells at lot 27. Her last black bull calf made his way to the keep pen. AI bred 25/09/22 to New Day Noble-Prize N22.

Purchaser: \_\_\_\_\_ Price: \_\_\_\_\_

# Lot 27

## WARRIGAL QUARTZ Q33 (P)(R)(PU)



IDENT JPRPQ33  
 DOB 17/10/2019  
 COLOUR Red  
 HORN Polled



Sire: RPY PAYNES DERBY 46Z (HP\*) (B) (PN) (AA)  
**WARRIGAL NIGHT RIDER N12 (HP\*) (PN) (AA)**  
 MANDAYEN POLLED ULTRA C897 (HP\*) (PF)

Dam: MANDAYEN MR JOCK K10 (P) (R) (PF)  
**RED ROCK VIOLET N223 (P) (R) (PU)**  
 RED ROCK VIOLET F711 (P) (PU)

	CED	DTRS	GL	BW	200	400	600	MCW	MILK	SS	CW	EMA	RIB	RUMP	RBY	IMF	DOC
<b>EBV</b>	<b>-1.5</b>	<b>+0.7</b>	<b>-1.2</b>	<b>+1.8</b>	<b>+23</b>	<b>+41</b>	<b>+57</b>	<b>+58</b>	<b>+9</b>	<b>+1.5</b>	<b>+36</b>	<b>+2.9</b>	<b>0.0</b>	<b>0.0</b>	<b>+1.0</b>	<b>-</b>	<b>+32</b>
Acc	33%	30%	46%	65%	63%	64%	68%	53%	46%	37%	49%	26%	28%	27%	27%	-	53%

**Comments:** A mothers daughter. A moderate thick-set easy keeping first calver with tremendous style and structure. Did a great job on her first calf which sells at lot 41. AI bred 25/09/22 to New Day Noble-Prize N22.

Purchaser: \_\_\_\_\_ Price: \_\_\_\_\_

# Lot 28

## RED ROCK BUTTERNUT N272 (P)(R)(PF)



IDENT PAPN272  
 DOB 05/09/2017  
 COLOUR Red  
 HORN Heterozygous Polled by DNA



Sire: FLEMINGTON FIRE CRACKER F21 (HP\*) (PF)  
**FLEMINGTON KRACKER K50 (HP\*) (R) (PF) (AA)**  
 SUMMIT MAGIC H25 (P) (B) (PF) (AA)

Dam: PREMIER GUARDIAN B80 (P) (PF)  
**RED ROCK BUTTERNUT D478 (P) (PF)**  
 LONGREACH BUTTERNUT (P) (PF)

	CED	DTRS	GL	BW	200	400	600	MCW	MILK	SS	CW	EMA	RIB	RUMP	RBY	IMF	DOC
<b>EBV</b>	<b>-0.6</b>	<b>+0.5</b>	<b>-3.8</b>	<b>+2.9</b>	<b>+32</b>	<b>+52</b>	<b>+78</b>	<b>+83</b>	<b>+6</b>	<b>+2.1</b>	<b>+43</b>	<b>+2.1</b>	<b>-0.3</b>	<b>-0.5</b>	<b>+1.2</b>	<b>-</b>	<b>+12</b>
Acc	37%	31%	47%	61%	60%	61%	59%	46%	49%	38%	45%	25%	29%	29%	27%	-	61%

**Comments:** Another cow line aquired from the Red Rock dispersal, N272 was the calf at foot and was one of the pick heifer calves in the sale. N272 is moderate, fleshy cow with a beautiful udder. Weaned off a lovely heifer calf that sells at lot 40. AI bred 21/05/22 to Balamore Gryphon.

Purchaser: \_\_\_\_\_ Price: \_\_\_\_\_



# Lot 29

## RYRADAN PARK BUTTERNUT R6 (P)(PF)



IDENT RRDP6  
 DOB 02/12/2020  
 COLOUR Apricot  
 HORN Polled



Sire: RPY PAYNES DERBY 46Z (HP\*) (B) (PN) (AA)  
**WARRIGAL NIGHT RIDER N12 (HP\*) (PN) (AA)**  
 MANDAYEN POLLED ULTRA C897 (HP\*) (PF)

Dam: FLEMINGTON KRACKER K50 (HP\*) (R) (PF) (AA)  
**RED ROCK BUTTERNUT N272 (P) (R) (PF)**  
 RED ROCK BUTTERNUT D478 (P) (PF)

	CED	DTRS	GL	BW	200	400	600	MCW	MILK	SS	CW	EMA	RIB	RUMP	RBY	IMF	DOC
<b>EBV</b>	<b>+0.3</b>	<b>+0.3</b>	<b>-2.8</b>	<b>+2.3</b>	<b>+28</b>	<b>+52</b>	<b>+72</b>	<b>+76</b>	<b>+8</b>	<b>+1.9</b>	<b>+45</b>	-	<b>-0.4</b>	<b>-0.6</b>	<b>+1.5</b>	-	<b>+10</b>
Acc	32%	28%	46%	65%	61%	63%	68%	52%	38%	35%	47%	-	26%	25%	25%	-	51%

**Comments:** Long hipped, super stylish with a beautiful front end. Terrific udder development that her dam Butternut N272 possess. AI bred 21/05/22 to Balamore Gryphon.

Purchaser: \_\_\_\_\_ Price: \_\_\_\_\_

# Lot 30

## MANDAYEN DAPHNE M222 (P)(B)(PF)



IDENT MDNPM222  
 DOB 16/09/2016  
 COLOUR Black  
 HORN Heterozygous Polled by DNA



Sire: WULFS UNCONQUERED 5517U (P) (B) (PU)  
**WULFS ZANDER X921Z (HP\*) (B) (PN)**  
 WULFS JOY BELLS 9202J (HP\*) (R) (PU)

Dam: MANDAYEN COOKIE MONSTER C1006 (P) (B) (PF) (AA)  
**MANDAYEN DAPHNE G1974 (P) (B) (PF)**  
 MANDAYEN DAPHNE D1278 (P) (B) (PF)

	CED	DTRS	GL	BW	200	400	600	MCW	MILK	SS	CW	EMA	RIB	RUMP	RBY	IMF	DOC
<b>EBV</b>	<b>+2.2</b>	<b>+2.1</b>	<b>-3.0</b>	<b>+0.6</b>	<b>+19</b>	<b>+34</b>	<b>+45</b>	<b>+50</b>	<b>+10</b>	<b>+0.8</b>	<b>+30</b>	<b>+2.1</b>	<b>+1.4</b>	<b>+1.9</b>	<b>-1.2</b>	<b>+0.7</b>	<b>+45</b>
Acc	46%	41%	75%	77%	73%	73%	76%	60%	63%	55%	57%	46%	59%	58%	52%	51%	68%

**Comments:** Mandayen Daphne was purchased with one of the top black heifer calves at foot. Roomy with more frame backed by the famous dam - Wulfs Joybells. Black heifer calf born 28/10/22 sired by Ulster 1 Quarterback Q342. See supplementary sheet for joining.

Purchaser: \_\_\_\_\_ Price: \_\_\_\_\_

# Lot 31

## MANDAYEN DAPHNE R117 (HP\*) (B) (PN) (AA)



IDENT MDNPR117  
 DOB 10/09/2020  
 COLOUR Black  
 HORN Homo. Polled (by DNA test)



Sire: **SUMMIT PROTOTYPE M148 (2P) (B) (PF) (2A)**  
 WULFS ZANE X238Z (HP\*) (B) (PN) (AA)  
 BIRUBI KARISMA FLASH K81 (HP\*) (R) (PF) (2A)

Dam: **MANDAYEN DAPHNE M222 (P) (B) (PF)**  
 WULFS ZANDER X921Z (HP\*) (B) (PN)  
 MANDAYEN DAPHNE G1974 (P) (B) (PF)

	CED	DTRS	GL	BW	200	400	600	MCW	MILK	SS	CW	EMA	RIB	RUMP	RBY	IMF	DOC
<b>EBV</b>	<b>+1.9</b>	<b>+1.1</b>	<b>-5.5</b>	<b>0.0</b>	<b>+19</b>	<b>+39</b>	<b>+51</b>	<b>+56</b>	<b>+6</b>	<b>+0.7</b>	<b>+37</b>	<b>+3.3</b>	<b>+1.0</b>	<b>+1.4</b>	<b>-0.3</b>	<b>+0.6</b>	<b>+58</b>
Acc	39%	33%	59%	68%	61%	60%	61%	46%	41%	49%	45%	37%	45%	44%	40%	39%	56%

**Comments:** Black homo polled heifer who calved down as a two year old. Black homo polled heifer calf at foot sired by Warrigal Remington R8. Tidy data set with low birthweight and high docility. AI bred 28/10/22 to Balamore Endeavor.

Purchaser: \_\_\_\_\_ Price: \_\_\_\_\_

# Lot 32

## WARRIGAL DAPHNE S17 (P) (B) (PN) (AA)



IDENT JPRPS17  
 DOB 02/09/2021  
 COLOUR Heterozygous Black by DNA  
 HORN Heterozygous Polled by DNA



Sire: **BALAMORE ENDEAVOR 701E (HP\*) (HB\*) (PN) (AA)**  
 RLF YARDLEY 601Y (HP\*) (HB) (PN) (AA)  
 CLARKS AFFECTIVE KISS (P) (B) (PU)

Dam: **NEW DAY DAPHNE P32 (P) (B) (PN) (AA)**  
 SOUTHWEST NOBEL PRIZE K9 (HP\*) (B) (PF) (AA)  
 MANDAYEN DAPHNE J2551 (P) (B) (PF)

	CED	DTRS	GL	BW	200	400	600	MCW	MILK	SS	CW	EMA	RIB	RUMP	RBY	IMF	DOC
<b>EBV</b>	<b>+3.0</b>	<b>+2.2</b>	<b>-5.4</b>	<b>+0.9</b>	<b>+25</b>	<b>+43</b>	<b>+59</b>	<b>+65</b>	<b>+10</b>	<b>+1.4</b>	<b>+39</b>	<b>+3.4</b>	<b>+0.1</b>	<b>+0.2</b>	<b>+1.0</b>	<b>+0.2</b>	<b>+46</b>
Acc	36%	29%	59%	68%	65%	66%	62%	46%	36%	45%	46%	28%	33%	32%	29%	27%	57%

**Comments:** The eldest of the Endeavor calves here at Warrigal and S17 impresses. Black, polled with plenty of shape and performance whilst still retaining that softness. Unjoined.

Purchaser: \_\_\_\_\_ Price: \_\_\_\_\_



# Lot 33

## WARRIGAL KRYSTAL S18 (HP\*) (B) (PF)



IDENT JPRPS18  
 DOB 02/09/2021  
 COLOUR Apricot  
 HORN Homo. Polled (by DNA test)



FLEMINGTON KRACKER K50 (HP\*) (R) (PF) (AA)  
 Sire: **SOUTHWEST KRACKER Q11 (HP\*) (B) (PN) (AA)**  
 SOUTHWEST BLACK SATIN F8 (P) (B) (PU)

WULFS COMPLIANT K687C (2P) (B) (PN) (AA)  
 Dam: **MANDAYEN KRYSTAL P56 (P) (PF)**  
 MANDAYEN KRYSTAL J2353 (P) (PF)

	CED	DTRS	GL	BW	200	400	600	MCW	MILK	SS	CW	EMA	RIB	RUMP	RBY	IMF	DOC
<b>EBV</b>	<b>-1.3</b>	<b>-1.3</b>	<b>-2.3</b>	<b>+2.4</b>	<b>+29</b>	<b>+45</b>	<b>+64</b>	<b>+65</b>	<b>+9</b>	<b>+1.5</b>	<b>+38</b>	-	<b>0.0</b>	<b>-0.1</b>	<b>+0.7</b>	<b>+0.1</b>	<b>+49</b>
Acc	32%	27%	54%	64%	61%	63%	58%	42%	37%	35%	43%	-	29%	28%	26%	25%	51%

**Comments:** S18 is a super showy heifer with a beautiful front end and a heap of neck extension. She is long, soft made and will grow into an easy keeping cow. Unjoined.

Purchaser: \_\_\_\_\_ Price: \_\_\_\_\_

# Lot 34

## WARRIGAL KRISTIN S19 (P) (B) (PU)



IDENT JPRPS19  
 DOB 03/09/2021  
 COLOUR Black  
 HORN Polled



RPY PAYNES BEAST 25B (P) (2B) (PU)  
 Sire: **RPY PAYNES DILLINGER 43D (HP\*) (HB\*) (PN) (AC)**  
 HSF ZENA (P) (B) (PU)

KING CREEK DAVINCI (PF) (AA)  
 Dam: **KING CREEK KRISTIN K210 (PU)**  
 KING CREEK AVA (PU)

	CED	DTRS	GL	BW	200	400	600	MCW	MILK	SS	CW	EMA	RIB	RUMP	RBY	IMF	DOC
<b>EBV</b>	<b>+0.1</b>	-	<b>-2.9</b>	<b>+0.9</b>	<b>+20</b>	<b>+35</b>	<b>+48</b>	<b>+49</b>	<b>+8</b>	<b>+1.1</b>	<b>+31</b>	-	-	-	-	-	<b>+48</b>
Acc	26%	-	49%	63%	60%	62%	57%	43%	32%	26%	40%	-	-	-	-	-	49%

**Comments:** S19 is a super deep sided, soft, fancy heifer sired by RPY Paynes Dillinger. This heifer displays so much softness and do-ability we have come to expect from her sire. Unjoined.

Purchaser: \_\_\_\_\_ Price: \_\_\_\_\_

# Lot 35

## WARRIGAL NEW MOON S21 (P)(B)(PN)(AA)



IDENT JPRPS21  
 DOB 20/09/2021  
 COLOUR Heterozygous Black by DNA  
 HORN Heterozygous Polled by DNA



FLEMINGTON KRACKER K50 (HP\*) (R) (PF) (AA)  
 Sire: **SOUTHWEST KRACKER Q11 (HP\*) (B) (PN) (AA)**  
 SOUTHWEST BLACK SATIN F8 (P) (B) (PU)

ANGLEDALE KASHABULL (P) (B) (PU)  
 Dam: **WARRIGAL NEW MOON (P) (B) (PU)**  
 DONNA VALLEY POLL DAPHNE A536 (P) (PF)

	CED	DTRS	GL	BW	200	400	600	MCW	MILK	SS	CW	EMA	RIB	RUMP	RBY	IMF	DOC
<b>EBV</b>	<b>+1.2</b>	<b>-0.3</b>	<b>-2.4</b>	<b>+1.8</b>	<b>+23</b>	<b>+35</b>	<b>+53</b>	<b>+57</b>	<b>+9</b>	<b>+1.4</b>	<b>+31</b>	-	-	-	-	-	<b>+26</b>
Acc	30%	25%	45%	63%	60%	62%	57%	41%	37%	29%	41%	-	-	-	-	-	51%

**Comments:** Bold hipped, powerful heifer displaying the power and shape we have come to expect from the New Moon family. See supplementary sheet for homo polled results. Unjoined.

Purchaser: \_\_\_\_\_ Price: \_\_\_\_\_

# Lot 36

## WARRIGAL FOXY LADY S23 (2P)(B)(PU)



IDENT JPRPS23  
 DOB 23/10/2021  
 COLOUR Black  
 HORN Homo. Polled (by Pedigree)



FLEMINGTON KRACKER K50 (HP\*) (R) (PF) (AA)  
 Sire: **SOUTHWEST KRACKER Q11 (HP\*) (B) (PN) (AA)**  
 SOUTHWEST BLACK SATIN F8 (P) (B) (PU)

WULFS NOBEL PRIZE 3861N (HP\*) (B) (PN) (AA)  
 Dam: **WARRIGAL FOXY LADY K13 (2P) (B) (PU)**  
 WARRIGAL FOXY LADY (HP\*) (PU)

	CED	DTRS	GL	BW	200	400	600	MCW	MILK	SS	CW	EMA	RIB	RUMP	RBY	IMF	DOC
<b>EBV</b>	<b>-0.4</b>	<b>-2.2</b>	<b>-1.1</b>	<b>+1.9</b>	<b>+24</b>	<b>+43</b>	<b>+60</b>	<b>+63</b>	<b>+8</b>	<b>+0.7</b>	<b>+40</b>	<b>+2.6</b>	<b>-0.3</b>	<b>-0.6</b>	<b>+1.2</b>	<b>0.0</b>	<b>+60</b>
Acc	34%	31%	49%	63%	60%	62%	58%	44%	42%	36%	44%	27%	29%	29%	28%	27%	52%

**Comments:** S23 is a stunning, soft made homo polled heifer from the great Foxy family. If you are looking to add a unique female with a super maternal pedigree to your herd, this just maybe the article you are looking for. Unjoined.

Purchaser: \_\_\_\_\_ Price: \_\_\_\_\_



# Lot 37

## WARRIGAL GABRIELLE S24 (HP\*) (R) (PF)



IDENT JPRPS24  
 DOB 03/10/2021  
 COLOUR Red  
 HORN Homo. Polled (by DNA test)



FLEMINGTON KRACKER K50 (HP\*) (R) (PF) (AA)  
 Sire: **SOUTHWEST KRACKER Q11 (HP\*) (B) (PN) (AA)**  
 SOUTHWEST BLACK SATIN F8 (P) (B) (PU)

MANDAYEN VISION C1054 (HP\*) (B) (PF) (AA)  
 Dam: **RYRADAN PARK GABRIELLE (P) (PF)**  
 DONNA VALLEY AVRIL (PN)

	CED	DTRS	GL	BW	200	400	600	MCW	MILK	SS	CW	EMA	RIB	RUMP	RBY	IMF	DOC
<b>EBV</b>	<b>+1.3</b>	<b>+0.6</b>	<b>-3.0</b>	<b>+1.1</b>	<b>+19</b>	<b>+29</b>	<b>+49</b>	<b>+55</b>	<b>+8</b>	<b>+0.8</b>	<b>+30</b>	<b>+1.7</b>	<b>-0.3</b>	<b>-0.7</b>	<b>+1.0</b>	<b>-</b>	<b>+33</b>
Acc	33%	29%	49%	66%	62%	64%	60%	45%	41%	36%	45%	25%	28%	27%	26%	-	53%

**Comments:** Only apricot yearling in the sale going back to the foundation of Ryan and Rachel's herd Donna Valley Avril. S24 is more of a tradition type with her muscle and shape. Unjoined.

Purchaser: \_\_\_\_\_ Price: \_\_\_\_\_

# Lot 38

## WARRIGAL CAVIAR S28 (2P) (B) (PF) (2A)



IDENT JPRPS28  
 DOB 03/11/2021  
 COLOUR Black  
 HORN Homo. Polled (by Pedigree)



FLEMINGTON KRACKER K50 (HP\*) (R) (PF) (AA)  
 Sire: **SOUTHWEST KRACKER Q11 (HP\*) (B) (PN) (AA)**  
 SOUTHWEST BLACK SATIN F8 (P) (B) (PU)

MANDAYEN FORTUNE M190 (P) (HB\*) (PN) (AA)  
 Dam: **WARRIGAL CAVIAR Q20 (HP\*) (B) (PF) (2A)**  
 WARRIGAL GOLDEN CAVIAR L4 (P) (PN) (AA)

	CED	DTRS	GL	BW	200	400	600	MCW	MILK	SS	CW	EMA	RIB	RUMP	RBY	IMF	DOC
<b>EBV</b>	<b>-1.8</b>	<b>-</b>	<b>-1.5</b>	<b>+2.7</b>	<b>+28</b>	<b>+46</b>	<b>+64</b>	<b>+66</b>	<b>+8</b>	<b>+1.6</b>	<b>+38</b>	<b>-</b>	<b>-</b>	<b>-</b>	<b>-</b>	<b>-</b>	<b>+62</b>
Acc	29%	-	43%	55%	56%	56%	53%	40%	33%	30%	40%	-	-	-	-	-	47%

**Comments:** Black homo polled Southwest Cracker Q11 daughter that has an attractive phenotype. A great data set with fertility and longevity built in. Unjoined.

Purchaser: \_\_\_\_\_ Price: \_\_\_\_\_

# Lot 39

## WARRIGAL SAVANNA S30 (LF) (HP\*) (HB\*) (PN) (AC)



IDENT JPRPS30  
 DOB 10/10/2021  
 COLOUR Homo. Black (by DNA test)  
 HORN Homo. Polled (by DNA test)



Sire: **SOUTHWEST KRACKER Q11 (HP\*) (B) (PN) (AA)**  
 SOUTHWEST BLACK SATIN F8 (P) (B) (PU)  
 Dam: **WARRIGAL M1 (P) (B) (PU)**  
 WARRIGAL LEBRON L12 (P) (B) (PF)

	CED	DTRS	GL	BW	200	400	600	MCW	MILK	SS	CW	EMA	RIB	RUMP	RBY	IMF	DOC
<b>EBV</b>	<b>-0.5</b>	-	<b>-4.1</b>	<b>+1.0</b>	<b>+21</b>	<b>+36</b>	<b>+54</b>	<b>+56</b>	<b>+8</b>	-	<b>+31</b>	-	-	-	-	-	<b>+39</b>
Acc	25%	-	42%	57%	48%	46%	47%	32%	27%	-	28%	-	-	-	-	-	45%

**Comments:** Big middle with a square hip and great structure. This heifer will grow out to be an impressive cow. Her grand dam rates as one of the best cows in our program. Unjoined.

Purchaser: \_\_\_\_\_ Price: \_\_\_\_\_

# Lot 40

## WARRIGAL BUTTERNUT T3 (P)(B)(PF)



IDENT JPRPT3  
 DOB 08/02/2022  
 COLOUR Black  
 HORN Heterozygous Polled by DNA



Sire: **RYRADAN PARK FORTUNE Q3 (P) (B) (PN) (AA)**  
 RYRADAN PARK TEMPTRESS N1 (HP\*) (B) (PN) (AA)  
 Dam: **RED ROCK BUTTERNUT N272 (P) (R) (PF)**  
 RED ROCK BUTTERNUT D478 (P) (PF)  
 FLEMINGTON KRACKER K50 (HP\*) (R) (PF) (AA)

	CED	DTRS	GL	BW	200	400	600	MCW	MILK	SS	CW	EMA	RIB	RUMP	RBY	IMF	DOC
<b>EBV</b>	<b>-1.6</b>	-	<b>-2.5</b>	<b>+2.9</b>	<b>+32</b>	<b>+45</b>	<b>+70</b>	<b>+69</b>	<b>+7</b>	<b>+1.8</b>	<b>+38</b>	-	-	-	-	-	<b>+39</b>
Acc	27%	-	37%	60%	57%	53%	52%	37%	32%	29%	35%	-	-	-	-	-	47%

**Comments:** Super stylish, sweet fronted female that is so well made with exceptional length that will develop into a great cow. Dam sells as lot 28. Homo polled test pending.

Purchaser: \_\_\_\_\_ Price: \_\_\_\_\_



# Lot 41

## WARRIGAL QUARTZ T5 (P)(B)(PU)



IDENT JPRPT5  
 DOB 16/02/2022  
 COLOUR Black  
 HORN Heterozygous Polled by DNA



MANDAYEN FORTUNE M190 (P) (HB\*) (PN) (AA)      WARRIGAL NIGHT RIDER N12 (HP\*) (PN) (AA)  
**Sire: RYRADAN PARK FORTUNE Q3 (P) (B) (PN) (AA)**      **Dam: WARRIGAL QUARTZ Q33 (P) (R) (PU)**  
 RYRADAN PARK TEMPTRESS N1 (HP\*) (B) (PN) (AA)      RED ROCK VIOLET N223 (P) (R) (PU)

	CED	DTRS	GL	BW	200	400	600	MCW	MILK	SS	CW	EMA	RIB	RUMP	RBY	IMF	DOC
<b>EBV</b>	<b>-1.9</b>	-	<b>-1.1</b>	<b>+2.0</b>	<b>+25</b>	<b>+36</b>	<b>+54</b>	<b>+52</b>	<b>+9</b>	<b>+1.4</b>	<b>+33</b>	-	-	-	-	-	<b>+37</b>
Acc	26%	-	34%	51%	55%	51%	51%	38%	32%	29%	37%	-	-	-	-	-	45%

**Comments:** A real classy heifer that combines plenty of natural thickness with depth and capacity. Dam sells as lot 27. Genetics going back to the Ultra C897 powerhouse cow. Homo polled test pending.

Purchaser: \_\_\_\_\_ Price: \_\_\_\_\_

# Lot 42

## WARRIGAL TO ORDER T6 (P)(B)(PU)



IDENT JPRPT6  
 DOB 28/02/2022  
 COLOUR Black  
 HORN Polled



MANDAYEN FORTUNE M190 (P) (HB\*) (PN) (AA)      ANGLEDAL KASHABULL (P) (B) (PU)  
**Sire: RYRADAN PARK FORTUNE Q3 (P) (B) (PN) (AA)**      **Dam: WARRIGAL CAVIAR N14 (B) (PU)**  
 RYRADAN PARK TEMPTRESS N1 (HP\*) (B) (PN) (AA)      WARRIGAL GOLDEN CAVIAR L4 (P) (PN) (AA)

	CED	DTRS	GL	BW	200	400	600	MCW	MILK	SS	CW	EMA	RIB	RUMP	RBY	IMF	DOC
<b>EBV</b>	<b>+0.1</b>	-	<b>-1.2</b>	<b>+2.3</b>	<b>+28</b>	<b>+40</b>	<b>+62</b>	<b>+58</b>	<b>+11</b>	<b>+1.4</b>	<b>+38</b>	-	-	-	-	-	<b>+37</b>
Acc	27%	-	36%	60%	57%	53%	53%	37%	35%	28%	36%	-	-	-	-	-	47%

**Comments:** A larger framed heifer that shows a lot of natural thickness, strength of spine and under development. Dam sells as lot 7, grand dam lot 5. Unjoined.

Purchaser: \_\_\_\_\_ Price: \_\_\_\_\_

# Lot 43

## WARRIGAL FOXY LADY T9 (HP\*) (B) (PU)



IDENT JPRPT9  
 DOB 09/03/2022  
 COLOUR Black  
 HORN Homo. Polled (by DNA test)



Sire: MANDAYEN FORTUNE M190 (P) (HB\*) (PN) (AA) RYRADAN PARK FORTUNE Q3 (P) (B) (PN) (AA) RYRADAN PARK TEMPTRESS N1 (HP\*) (B) (PN) (AA)  
 Dam: GREENWOOD CANADIAN WAYS (2P) (B) (PN) (AA) WARRIGAL FOXY LADY Q1 (2P) (R) (PU) WARRIGAL FOXY LADY M22 (2P) (PU)

	CED	DTRS	GL	BW	200	400	600	MCW	MILK	SS	CW	EMA	RIB	RUMP	RBY	IMF	DOC
EBV	-1.4	-	-2.0	+2.4	+28	+42	+64	+60	+9	+1.3	+36	-	-	-	-	-	+50
Acc	27%	-	40%	60%	57%	53%	53%	37%	30%	29%	36%	-	-	-	-	-	46%

**Comments:** This great natured heifer has a lot of potential and shows natural thickness and substance at an early age. Out of the powerhouse Foxy Lady Q1 (lot 13) and grand dam Foxy Lady M22 (lot 12). Homo polled test pending.

Purchaser: \_\_\_\_\_ Price: \_\_\_\_\_

# Lot 44

## WARRIGAL TILLY T12 (HP\*) (B) (PF)



IDENT JPRPT12  
 DOB 09/04/2022  
 COLOUR Black  
 HORN Homo. Polled (by DNA test)



Sire: MANDAYEN FORTUNE M190 (P) (HB\*) (PN) (AA) RYRADAN PARK FORTUNE Q3 (P) (B) (PN) (AA) RYRADAN PARK TEMPTRESS N1 (HP\*) (B) (PN) (AA)  
 Dam: MANDAYEN ENERGIZER E1338 (P) (R) (PN) (AA) MANDAYEN KRYSTAL J2411 (P) (PF) MANDAYEN KRYSTAL B724 (P) (PF)

	CED	DTRS	GL	BW	200	400	600	MCW	MILK	SS	CW	EMA	RIB	RUMP	RBY	IMF	DOC
EBV	-2.6	+1.2	-0.6	+2.6	+26	+35	+55	+55	+10	+1.5	+29	+2.2	+0.4	+0.4	+0.3	+0.2	+52
Acc	35%	32%	44%	60%	57%	54%	54%	41%	42%	37%	40%	29%	33%	32%	30%	30%	50%

**Comments:** This heifer has the length and style with a great maternal outlook. Her dam lot 20 is a powerful big bodied cow that originated from the high content Krystal family line. Maternal sisters sell as lot 21 and 22. Homo polled test pending.

Purchaser: \_\_\_\_\_ Price: \_\_\_\_\_



# Lot 45

## WARRIGAL TALKINDIRTY T14 (P) (HB\*) (PN) (AA)



IDENT JPRPT14  
 DOB 17/04/2022  
 COLOUR Homo. Black (by DNA test)  
 HORN Heterozygous Polled by DNA



Sire: MANDAYEN FORTUNE M190 (P) (HB\*) (PN) (AA) RYRADAN PARK FORTUNE Q3 (P) (B) (PN) (AA) RYRADAN PARK TEMPTRESS N1 (HP\*) (B) (PN) (AA)  
 Dam: MANDAYEN ENERGISER H2076 (HP\*) (PF) WARRIGAL NICKY'S LADY L17 (2P) (B) (PF) MANDAYEN NICKY'S PRIZE D1105 (HP\*) (B) (PF)

	CED	DTRS	GL	BW	200	400	600	MCW	MILK	SS	CW	EMA	RIB	RUMP	RBY	IMF	DOC
EBV	-1.8	+0.1	-0.3	+2.3	+24	+30	+49	+46	+8	+1.1	+26	+2.0	+0.4	+0.4	+0.3	+0.2	+51
Acc	32%	28%	41%	59%	56%	53%	53%	39%	39%	35%	38%	27%	30%	30%	27%	26%	49%

**Comments:** A moderate framed young female who is very structurally correct, strong muscle content with a feminine outlook. Her dam has had a major influence in our herd with a son working at Lindesay View Limousins. Maternal sister lot 16. Big chance of being homo polled, homo black. Test pending.

Purchaser: \_\_\_\_\_ Price: \_\_\_\_\_

# Lot 46

## MANDAYEN POLLED WYNNE D1122 (P) (B) (PF)



IDENT MDNPD1122  
 DOB 20/04/2008  
 COLOUR Black  
 HORN Polled



Sire: COLE WULF HUNT (P) (HB\*) (PN) (AA) WULFS NOBEL PRIZE 3861N (HP\*) (B) (PN) (AA) WULFS CASUAL 3161C (PU)  
 Dam: WULFS RAMBLER 8400X (S) (R) (PN) (AA) MANDAYEN POLLED WYNNE (P) (PN) NIGRETTA LILT (PU)

	CED	DTRS	GL	BW	200	400	600	MCW	MILK	SS	CW	EMA	RIB	RUMP	RBY	IMF	DOC
EBV	+1.4	+0.1	-1.3	+0.3	+14	+32	+31	+26	+15	+0.2	+31	+2.9	-0.6	-1.0	+1.6	-0.2	+53
Acc	62%	57%	81%	83%	80%	78%	78%	67%	77%	63%	64%	52%	57%	57%	53%	52%	80%

**Comments:** Rarely an opportunity like this comes around. This cow never misses. Currently three sons doing stud duties and two working at Alexander Downs. Daughters sell at lot 1 and 3. The winning bid is entitled to one flush with a guarantee of four embryos. All flush cost are the responsibility of the purchaser with a mutually agreed technician.

Purchaser: \_\_\_\_\_ Price: \_\_\_\_\_

# Lot 47

## WARRIGAL CANADIAN WAYS S4 (P)(R)(PF)



IDENT JPRPS4  
 DOB 09/04/2021  
 COLOUR Red  
 HORN Polled



Sire: **GREENWOOD CANADIAN WAYS (2P) (B) (PN) (AA)** Greenwood Wisteria Lane (HP\*) (B) (PN)  
 Dam: **MANDAYEN KRISTAL J2353 (P) (PF)** Mandayen Guardian A488 (P) (R) (PN) (AA)  
 Mandayen Krystal G1859 (P) (PF)

	CED	DTRS	GL	BW	200	400	600	MCW	MILK	SS	CW	EMA	RIB	RUMP	RBY	IMF	DOC
<b>EBV</b>	<b>+1.8</b>	<b>-0.7</b>	<b>-6.2</b>	<b>+1.4</b>	<b>+26</b>	<b>+45</b>	<b>+64</b>	<b>+55</b>	<b>+9</b>	<b>+1.5</b>	<b>+34</b>	<b>+1.9</b>	<b>+0.4</b>	<b>+0.6</b>	<b>+0.4</b>	<b>+0.1</b>	<b>+35</b>
Acc	40%	34%	70%	66%	62%	60%	60%	47%	43%	41%	45%	33%	41%	40%	37%	35%	57%

**Comments:** Slick coated red bull. Long bodied, structurally sound, middle of the road maturity pattern. Low birth weight and well above average for growth traits. His dam was selected from Mandayen and has been a tremendous breeder producing consistency and great type in her calves. S4 has been used lightly in herd. Homo polled test pending.

Purchaser: \_\_\_\_\_ Price: \_\_\_\_\_

# Lot 48

## WARRIGAL SUGAR DADDY S25 (HP\*)(PF)(2A)



IDENT JPRPS25  
 DOB 11/10/2021  
 COLOUR Apricot  
 HORN Homo. Polled (by DNA test)



Sire: **SOUTHWEST KRACKER Q11 (HP\*) (B) (PN) (AA)** Flemington Kracker K50 (HP\*) (R) (PF) (AA)  
 Southwest Black Satin F8 (P) (B) (PU)  
 Dam: **WARRIGAL GOLDEN CAVIAR L4 (P) (PN) (AA)** Warrigal High Vision (P) (PF) (AA)  
 Warrigal Golden Caviar (P) (PF)

	CED	DTRS	GL	BW	200	400	600	MCW	MILK	SS	CW	EMA	RIB	RUMP	RBY	IMF	DOC
<b>EBV</b>	<b>-1.3</b>	<b>+2.4</b>	<b>-2.3</b>	<b>+2.7</b>	<b>+30</b>	<b>+52</b>	<b>+71</b>	<b>+75</b>	<b>+9</b>	<b>+1.6</b>	<b>+44</b>	-	<b>-0.2</b>	<b>-0.3</b>	<b>+1.1</b>	-	<b>+54</b>
Acc	33%	28%	48%	63%	59%	61%	57%	42%	39%	33%	42%	-	27%	26%	25%	-	51%

**Comments:** We think this bull is pretty special. He has everything you would look for in modern day limousin bull. He's structurally sound with a great set of NUTS. He carries plenty of thickness, dimension and combines that with softness and doing ability. Great data set of EBV's to work with. His dam is an impressive cow. A bull that could be considered for stud duties. Homo polled test pending.

Purchaser: \_\_\_\_\_ Price: \_\_\_\_\_



# Lot 49

## WARRIGAL SHOWMAN S9 (2P)(B)(PF)(2A)



IDENT JPRPS9  
 DOB 01/08/2021  
 COLOUR Black  
 HORN Homo. Polled (by Pedigree)



FLEMINGTON KRACKER K50 (HP\*) (R) (PF) (AA)  
 Sire: SOUTHWEST KRACKER Q11 (HP\*) (B) (PN) (AA)  
 SOUTHWEST BLACK SATIN F8 (P) (B) (PU)

WULFS COMPLIANT K687C (2P) (B) (PN) (AA)  
 Dam: MANDAYEN STAR P6 (HP\*) (B) (PN) (AA)  
 MANDAYEN STARR E1410 (P) (B) (PF)

	CED	DTRS	GL	BW	200	400	600	MCW	MILK	SS	CW	EMA	RIB	RUMP	RBY	IMF	DOC
EBV	+0.3	+1.5	-2.4	+1.5	+25	+37	+53	+56	+10	+1.2	+36	+2.8	+0.1	+0.2	+0.6	+0.2	+54
Acc	33%	28%	50%	64%	60%	60%	57%	42%	36%	36%	41%	25%	28%	28%	26%	25%	48%

**Comments:** Homo polled and calving ease. S9 has to be admired for his thickness, softness, capacity and placid nature. Out of a really good Compliant daughter. S9 has a strong pedigree for maternal strength. This bull is worth a second look. Dam sells at lot 4.

Purchaser: \_\_\_\_\_ Price: \_\_\_\_\_

# Lot 50

## WARRIGAL SHOWTIME S12 (P)(HB\*)(PN)(AA)



IDENT JPRPS12  
 DOB 07/08/2021  
 COLOUR Homo. Black (by DNA test)  
 HORN Heterozygous Polled by DNA



RPY PAYNES BEAST 25B (P) (2B) (PU)  
 Sire: RPY PAYNES DILLINGER 43D (HP\*) (HB\*) (PN) (AC)  
 HSF ZENA (P) (B) (PU)

RPY PAYNES DERBY 46Z (HP\*) (B) (PN) (AA)  
 Dam: WARRIGAL WYNNES DERBY P4 (P) (B) (PF)  
 WARRIGAL WYNNES EXCEPTION K27 (B) (PF)

	CED	DTRS	GL	BW	200	400	600	MCW	MILK	SS	CW	EMA	RIB	RUMP	RBY	IMF	DOC
EBV	-0.8	-	-2.3	+1.5	+25	+47	+61	+63	+13	+1.6	+41	-	-0.3	-0.2	-	-	+22
Acc	31%	-	53%	64%	59%	59%	56%	39%	30%	29%	38%	-	26%	25%	-	-	45%

**Comments:** If you are looking for a bull to add punch and thickness to your calf drop, check out S12. A bull with plenty of muscle shape but also softness with the ability to lay down fat. Brother working at Alexander Downs. Dam sells at lot 2. Homo polled, homo black test pending.

Purchaser: \_\_\_\_\_ Price: \_\_\_\_\_

# Lot 51

## WARRIGAL SHOGUN S15 (HP\*) (B) (PF)



IDENT JPRPS15  
 DOB 10/08/2021  
 COLOUR Black  
 HORN Homo. Polled (by DNA test)



Sire: FLEMINGTON KRACKER K50 (HP\*) (R) (PF) (AA)  
 SOUTHWEST KRACKER Q11 (HP\*) (B) (PN) (AA)  
 SOUTHWEST BLACK SATIN F8 (P) (B) (PU)

Dam: FLEMINGTON EXCEPTION E19 (PN) (AA)  
 WARRIGAL NICKYS EXCEPTION K23 (P) (PF)  
 WARRIGAL NICKY'S VISION F11 (2P) (B) (PF)

	CED	DTRS	GL	BW	200	400	600	MCW	MILK	SS	CW	EMA	RIB	RUMP	RBY	IMF	DOC
<b>EBV</b>	<b>-1.0</b>	<b>-1.2</b>	<b>-0.2</b>	<b>+2.3</b>	<b>+23</b>	<b>+38</b>	<b>+58</b>	<b>+61</b>	<b>+6</b>	<b>+1.0</b>	<b>+36</b>	-	<b>-0.4</b>	<b>-0.7</b>	<b>+1.3</b>	-	<b>+49</b>
Acc	33%	29%	49%	52%	49%	47%	47%	35%	38%	32%	35%	-	27%	26%	25%	-	49%

**Comments:** The thickness and growth from Southwest Cracker Q11 coupled with the maternal master piece of Nicky's Exception K23. This combo has added a little more lift in frame. S15's dam has been a productive donor dam who has multiple progeny in the sale draft and just keeps punching out good ones. Homo polled test pending.

Purchaser: \_\_\_\_\_ Price: \_\_\_\_\_

# Lot 52

## WARRIGAL SMOKIN' JOE S22 (P) (B) (PF)



IDENT JPRPS22  
 DOB 23/09/2021  
 COLOUR Black  
 HORN Heterozygous Polled by DNA



Sire: RLF YARDLEY 601Y (HP\*) (HB) (PN) (AA)  
 BALAMORE ENDEAVOR 701E (HP\*) (HB\*) (PN) (AA)  
 CLARKS AFFECTIVE KISS (P) (B) (PU)

Dam: FLEMINGTON EXCEPTION E19 (PN) (AA)  
 WARRIGAL NICKYS EXCEPTION K23 (P) (PF)  
 WARRIGAL NICKY'S VISION F11 (2P) (B) (PF)

	CED	DTRS	GL	BW	200	400	600	MCW	MILK	SS	CW	EMA	RIB	RUMP	RBY	IMF	DOC
<b>EBV</b>	<b>+4.0</b>	<b>-0.2</b>	<b>-3.9</b>	<b>0.0</b>	<b>+18</b>	<b>+29</b>	<b>+43</b>	<b>+47</b>	<b>+6</b>	<b>+0.6</b>	<b>+34</b>	<b>+3.4</b>	<b>-0.3</b>	<b>-0.5</b>	<b>+1.6</b>	<b>0.0</b>	<b>+62</b>
Acc	39%	33%	58%	67%	63%	63%	59%	43%	38%	45%	44%	28%	34%	33%	30%	28%	57%

**Comments:** Smokin'Joe S22 is a cool young sure with that classic modern Limousin shape. Showing great muscle expression wrapped in a stylish easy finishing type. Short gestation and low birthweight, this bull should be suitable for heifer joinings. Homo polled test pending.

Purchaser: \_\_\_\_\_ Price: \_\_\_\_\_





# Lot 54

## 4 X EMBRYOS MDNPD1122 X IMCPH46



**Sire:** KAJO RESPONDER 120R (P) (2B) (PN)  
 RPY PAYNES DERBY 46Z (HP\*) (B) (PN) (AA)  
 IVY'S POLLED PRINCESS 1P (HP\*) (PN)

**Dam:** WULFS NOBEL PRIZE 3861N (HP\*) (B) (PN) (AA)  
 MANDAYEN POLLED WYNNE D1122 (P) (B) (PF)  
 MANDAYEN POLLED WYNNE (P) (PN)

### Expected Average Progeny Value

	CED	DTRS	GL	BW	200	400	600	MCW	MILK	SS	CW	EMA	RIB	RUMP	RBY	IMF	DOC
<b>EBV</b>	+1.4	+0.1	-1.3	+0.3	+14	+32	+31	+26	+15	+0.2	+31	+2.9	-0.6	-1.0	+1.6	-0.2	+53
Avg.	+0.4	+0.7	-2.0	+1.7	+21	+35	+48	+49	+7	+1.0	+30	+1.7	+0.0	-0.2	+0.8	+0.0	+42

**Comments:** 4 Embryos. This joining will add extra spring of rib, low birth weight, double the breed average for milk. Warrigal Next G a prime example

Purchaser: \_\_\_\_\_ Price: \_\_\_\_\_

# Lot 55

## 4 X EMBRYOS MDNPD1122 X IMCPC711



**Sire:** COLE ARCHITECT 08A (HP\*) (B) (PN)  
 GREENWOOD CANADIAN WAYS (2P) (B) (PN) (AA)  
 GREENWOOD WISTERIA LANE (HP\*) (B) (PN)

**Dam:** WULFS NOBEL PRIZE 3861N (HP\*) (B) (PN) (AA)  
 MANDAYEN POLLED WYNNE D1122 (P) (B) (PF)  
 MANDAYEN POLLED WYNNE (P) (PN)

### Expected Average Progeny Value

	CED	DTRS	GL	BW	200	400	600	MCW	MILK	SS	CW	EMA	RIB	RUMP	RBY	IMF	DOC
<b>EBV</b>	+1.5	-1.9	-3.0	+1.3	+23	+43	+53	+48	+14	+1.0	+35	+3.1	+0.0	+0.1	+1.1	0.0	+42
Avg.	+0.4	+0.7	-2.0	+1.7	+21	+35	+48	+49	+7	+1.0	+30	+1.7	+0.0	-0.2	+0.8	+0.0	+42

**Comments:** 4 Embryos. A low birth weight joining with the extra growth that Canadian Ways brings. With the matron herself adding extra milk. Bulls from this joining have sold well, Canadian Ways has been breeding some awesome females and this joining would be no exception!

Purchaser: \_\_\_\_\_ Price: \_\_\_\_\_



# Lot 56

## 4 X EMBRYOS JPRPF7 X IMCPK5



**Sire:** RPY PAYNES DERBY 46Z (HP\*) (B) (PN) (AA)  
**B BAR BRICK 5B (HP\*) (PN) (AA)**  
 ANCHOR B URBAN GIRL (P) (PU)

**Dam:** MANDAYEN VISION C1054 (HP\*) (B) (PF) (AA)  
**WARRIGAL FOXY LADY (HP\*) (PU)**  
 KIPPAX VALLEY SHESCHARMING (P) (PU)

### Expected Average Progeny Value

	CED	DTRS	GL	BW	200	400	600	MCW	MILK	SS	CW	EMA	RIB	RUMP	RBY	IMF	DOC
<b>EBV</b>	-0.1	+0.1	-3.4	+2.0	+28	+55	+76	+75	+13	+1.2	+50	+3.8	-0.3	-0.4	+1.5	-0.1	+24
Avg.	+0.4	+0.7	-2.0	+1.7	+21	+35	+48	+49	+7	+1.0	+30	+1.7	+0.0	-0.2	+0.8	+0.0	+42

**Comments:** 4 Embryos. Foxy Lady F7 a proven breeder with progeny at Summit Livestock, Pelican Rise and Alexander Downs. This joining should add power and performance, lot 12 Foxy Lady M22 an example of this. All progeny will be homo polled.

Purchaser: \_\_\_\_\_ Price: \_\_\_\_\_

# Lot 57

## 4 X EMBRYOS JPRPM22 X KGRPK9



**Sire:** MANDAYEN NOBEL PRIZE G1860 (P) (B) (PF)  
**SOUTHWEST NOBEL PRIZE K9 (HP\*) (B) (PF) (AA)**  
 BIRUBI GOLDEN GIRL G135 (P) (PF)

**Dam:** RPY PAYNES DERBY 46Z (HP\*) (B) (PN) (AA)  
**WARRIGAL FOXY LADY M22 (2P) (PU)**  
 WARRIGAL FOXY LADY (HP\*) (PU)

### Expected Average Progeny Value

	CED	DTRS	GL	BW	200	400	600	MCW	MILK	SS	CW	EMA	RIB	RUMP	RBY	IMF	DOC
<b>EBV</b>	-1.0	+1.4	-2.5	+2.5	+27	+52	+74	+75	+13	+1.5	+44	+3.0	-0.2	-0.3	+1.4	0.0	+39
Avg.	+0.4	+0.7	-2.0	+1.7	+21	+35	+48	+49	+7	+1.0	+30	+1.7	+0.0	-0.2	+0.8	+0.0	+42

**Comments:** 4 Embryos. Want to breed your next female with your own prefix? Foxy Lady M22, Sydney Royal Grand Champion Limousin Female with an impressive cow breeder, Southwest Noble Prize K9. All progeny will be homo polled.

Purchaser: \_\_\_\_\_ Price: \_\_\_\_\_



# Lot 58

## 4 X EMBRYOS JPRPK23 X KGRPQ11



FLEMINGTON KRACKER K50 (HP\*) (R) (PF) (AA)  
**Sire: SOUTHWEST KRACKER Q11 (HP\*) (B) (PN) (AA)**  
 SOUTHWEST BLACK SATIN F8 (P) (B) (PU)

FLEMINGTON EXCEPTION E19 (PN) (AA)  
**Dam: WARRIGAL NICKYS EXCEPTION K23 (P) (PF)**  
 WARRIGAL NICKY'S VISION F11 (2P) (B) (PF)

### Expected Average Progeny Value

	CED	DTRS	GL	BW	200	400	600	MCW	MILK	SS	CW	EMA	RIB	RUMP	RBY	IMF	DOC
<b>EBV</b>	-1.1	-1.2	-0.1	+2.3	+23	+38	+58	+61	+6	+1.0	+36	+2.3	-0.4	-0.8	+1.3	-	+45
Avg.	+0.4	+0.7	-2.0	+1.7	+21	+35	+48	+49	+7	+1.0	+30	+1.7	+0.0	-0.2	+0.8	+0.0	+42

**Comments:** 4 Embryos. Nicky's Exception K23 has really excelled breeding powerful females and handy bulls. Southwest Kracker Q11 has bred well for us here with numerous progeny in sale. Embryo brother sells at lot 51

Purchaser: \_\_\_\_\_ Price: \_\_\_\_\_

# Lot 59

## 5 X EMBRYOS KVLPA6 X MDNPJ2355



Daughter - JPRPF7

MANDAYEN GUARDIAN A488 (P) (R) (PN) (AA)  
**Sire: MANDAYEN JACKAROO J2355 (HP\*) (PN) (AA)**  
 MANDAYEN JILL G1913 (P) (PF)

WULFS EXPLOSION 0184E (P) (B) (PN) (AA)  
**Dam: KIPPAX VALLEY SHESCHARMING (P) (PU)**  
 KIPPAX VALLEY SHESACHARMER (PU)

### Expected Average Progeny Value

	CED	DTRS	GL	BW	200	400	600	MCW	MILK	SS	CW	EMA	RIB	RUMP	RBY	IMF	DOC
<b>EBV</b>	+3.5	-1.9	-2.2	+1.5	+20	+31	+47	+36	+1	+0.4	+31	+3.1	+0.2	+0.1	+0.7	+0.2	+51
Avg.	+0.4	+0.7	-2.0	+1.7	+21	+35	+48	+49	+7	+1.0	+30	+1.7	+0.0	-0.2	+0.8	+0.0	+42

**Comments:** 5 Embryos. Shescharming, an oldie but a goodie foundation cow which the Foxy Lady lady line was built on. With the joining of Jackaroo bringing extra eye muscle, positive fats and double the breed average for IMF.

Purchaser: \_\_\_\_\_ Price: \_\_\_\_\_

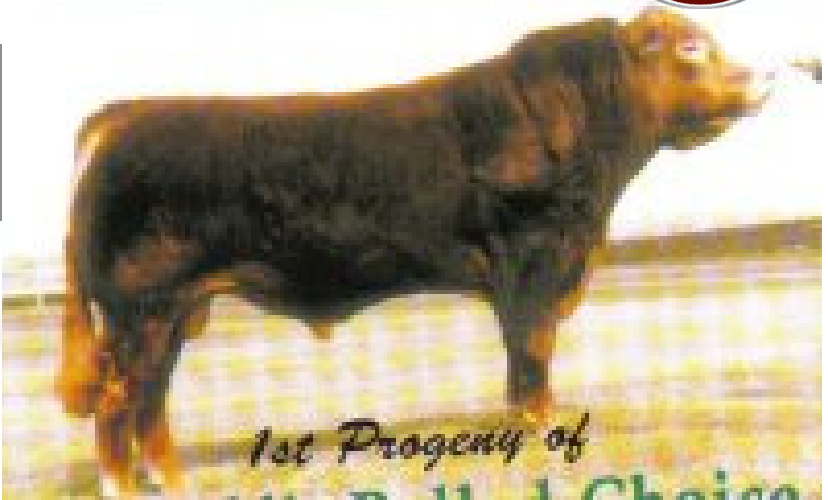


# Lot 60

## 2 x STRAWS WULFS CHOICE 1026C



IDENT IMUPN1026  
 DOB 06/03/1993  
 COLOUR Apricot  
 HORN Homo. Polled



Sire: WULFS BUSINESSMAN 714W (S) (R) (PU)  
 WULFS POLLED PROGRESS (P) (PU) (AC)  
 MISS WOLFETTE 9081X (P) (R) (PU)

Dam: GREAT NORTHERN 9079R (PU)  
 WULFS AMANA 1026A (P) (B) (PU)  
 MISS WOLFETTE 9230X (P) (B) (PU)

	CED	DTRS	GL	BW	200	400	600	MCW	MILK	SS	CW	EMA	RIB	RUMP	RBY	IMF	DOC
EBV	+4.8	-4.6	-3.8	+0.4	+11	+17	+24	+10	+13	+1.2	+10	+0.5	+1.6	+1.5	-0.9	+0.2	+48
Avg.	94%	93%	98%	98%	97%	97%	97%	95%	97%	95%	94%	86%	90%	89%	85%	83%	98%

Comments: 2 x straws on offer.

Purchaser: \_\_\_\_\_ Price: \_\_\_\_\_

# Lot 61

## 3 x STRAWS WULFS XTRACTOR X233X



IDENT IMUPF233  
 DOB 08/04/2010  
 COLOUR Apricot  
 HORN Homo. Polled (by DNA test)



Sire: WULFS REALTOR 1503R (HP\*) (B) (PN) (AC)  
 WULFS TITUS 2149T (P) (B) (PN)  
 WULFS MEADOW GRASS 2149M (PU)

Dam: COLE WOLF HUNT (P) (HB\*) (PN) (AA)  
 WULFS MYRENE 2332M (PU)  
 WULFS JOY BELLS 9202J (HP\*) (R) (PU)

	CED	DTRS	GL	BW	200	400	600	MCW	MILK	SS	CW	EMA	RIB	RUMP	RBY	IMF	DOC
EBV	+5.8	+2.0	-7.2	-0.1	+28	+54	+64	+62	+2	+2.4	+51	+3.8	-1.4	-2.0	+2.6	-0.2	+57
Avg.	91%	88%	98%	98%	97%	97%	97%	92%	96%	94%	91%	82%	90%	88%	83%	84%	98%

Comments: 3 x straws on offer.

Purchaser: \_\_\_\_\_ Price: \_\_\_\_\_

# Lot 62

## 4 x STRAWS WULFS WALDO T928W



IDENT IMUPE555  
 DOB 12/03/2009  
 COLOUR Red  
 HORN Scurred

**SEMEN OPPORTUNITY**



WULFS REALTOR 1503R (HP\*) (B) (PN) (AC)  
 Sire: WULFS TITUS 2149T (P) (B) (PN)  
 WULFS MEADOW GRASS 2149M (PU)

DVFC COOKIE MONSTER 108H (P) (B) (PN) (AA)  
 Dam: OKLF NOEL 356N (P) (PU)  
 SLVL IRON TEDDYBEAR 6305F (P) (PU)

	CED	DTRS	GL	BW	200	400	600	MCW	MILK	SS	CW	EMA	RIB	RUMP	RBY	IMF	DOC
EBV	-8.4	+1.0	-2.7	+3.6	+39	+66	+96	+97	+8	+2.9	+51	+3.3	+0.1	+0.3	+0.8	+0.4	+11
Avg.	74%	69%	94%	94%	92%	92%	92%	78%	87%	88%	79%	70%	79%	77%	70%	71%	95%

Comments: 4 x straws on offer.

Purchaser: \_\_\_\_\_ Price: \_\_\_\_\_

# Lot 63

## 5 x STRAWS JYF CHUNK 35C



IDENT IMCPC35  
 DOB 22/04/2015  
 COLOUR Red  
 HORN Homo. Polled (by DNA test)

**SEMEN OPPORTUNITY**



HC FINAL TIME 407 (HP\*) (B) (PN) (AC)  
 Sire: WULFS ZEPHYR X624Z (2P) (R) (PU)  
 WULFS SOLOIST 6284S (HP\*) (R) (PU)

CLLL NEW DIRECTION 394P (HP\*) (HB\*) (PU)  
 Dam: TMF MISS 186W (P) (B) (PU)  
 TOP MEADOW 412M (R) (PU)

	CED	DTRS	GL	BW	200	400	600	MCW	MILK	SS	CW	EMA	RIB	RUMP	RBY	IMF	DOC
EBV	-8.0	-5.9	-3.1	+3.2	+27	+49	+69	+69	+11	+2.2	+39	+3.8	-0.8	-1.2	+1.9	+0.2	+63
Avg.	66%	54%	92%	92%	87%	85%	87%	67%	55%	77%	66%	50%	62%	60%	53%	52%	91%

Comments: 5 x straws on offer.

Purchaser: \_\_\_\_\_ Price: \_\_\_\_\_



# Lot 64

## 10 x STRAWS MANDAYEN JACKAROO J2355



IDENT MDNPJ2355  
 DOB 26/04/2013  
 COLOUR Apricot  
 HORN Homo. Polled (by DNA test)



**SEMEN OPPORTUNITY**

WULFS GUARDIAN 5074G (P) (B) (PN) (AA)  
 Sire: MANDAYEN GUARDIAN A488 (P) (R) (PN) (AA)  
 MANDAYEN POLLED VERY SPECIAL (P) (PF)

HUNT MR JOCK 44J (P) (B) (PN) (AA)  
 Dam: MANDAYEN JILL G1913 (P) (PF)  
 RAMORNIE JILL A100 (S) (PF)

	CED	DTRS	GL	BW	200	400	600	MCW	MILK	SS	CW	EMA	RIB	RUMP	RBY	IMF	DOC
EBV	+9.4	+1.7	-5.0	+0.5	+23	+29	+43	+31	-4	+0.8	+30	+3.3	+0.5	+0.7	+0.3	+0.4	+54
Avg.	78%	67%	95%	94%	93%	93%	93%	81%	80%	90%	80%	70%	82%	80%	73%	74%	95%

Comments: 10 x straws on offer.

Purchaser: \_\_\_\_\_ Price: \_\_\_\_\_

# Lot 65

## 6 x STRAWS REFSTRUP TABIAS



IDENT IMDFB291  
 DOB 07/07/1982  
 COLOUR Apricot  
 HORN Horned



**SEMEN OPPORTUNITY**

HANDICAP (PU)  
 Sire: MARTINI (PU)  
 ENDIABLEE (PU)

135 FETICHE (PU)  
 Dam: JUNE ANETTE SONDERVANG (PU)  
 FRISETTE (PU)

	CED	DTRS	GL	BW	200	400	600	MCW	MILK	SS	CW	EMA	RIB	RUMP	RBY	IMF	DOC
EBV	-7.0	+2.3	-6.3	+3.7	+17	+28	+52	+53	+6	+2.3	+5	-1.8	0.0	-0.9	+0.3	-0.2	+30
Avg.	94%	94%	98%	98%	97%	97%	97%	95%	98%	93%	94%	76%	82%	81%	78%	68%	98%

Comments: 6 x straws on offer.

Purchaser: \_\_\_\_\_ Price: \_\_\_\_\_

# Lot 66

## SEMEN PACKAGE 10 x STRAWS TOTAL



### 7 x STRAWS - DJ GENTLEMAN IN BLACK (S) (B) (PN) (AA)

COLE FIRST DOWN 46D (HP\*) (HB\*) (PN) (AC)  
DJ GENTLEMAN IN BLACK (S) (B) (PN) (AA)  
DJ ESSENCE (P) (PU)

IDENT	IMUPS234
DOB	20/03/1997
COLOUR	Black
HORN	Scurred

### 3 x STRAWS - WULFS FOUNDATION 3497F (HP) (B) (PN)

WULFS QUARTERBACK 4222B (P) (B) (PN) (AA)  
WULFS FOUNDATION 3497F (HP) (B) (PN) (AA)  
WULFS CAKE WALK 3097C (PU)

IDENT	IMUPR3497
DOB	28/03/1996
COLOUR	Black
HORN	Homo. Polled

Comments: 7 x Straws DJ Gentleman in Black & 3 x Straws Wulfs Foundation on offer.

Purchaser: \_\_\_\_\_

Price: \_\_\_\_\_

# Lot 67

## SEMEN PACKAGE 4 x STRAWS TOTAL



### 1 x STRAWS - CHAZ FIRST CHOICE 6004F (HP) (HB\*) (PN)

COLE FIRST DOWN 46D (HP\*) (HB\*) (PN) (AC)  
CHAZ FIRST CHOICE 6004F (HP) (HB\*) (PN) (AA)  
CHAZ MISS ROXANNE 92C (P) (B) (PU)

IDENT	IMUPR6004
DOB	10/02/1996
COLOUR	Homo. Black (by DNA test)
HORN	Homo. Polled

### 1 x STRAWS - RUNL STETSON 850S (2P) (HB) (PN) (AA)

JCL LODESTAR 27L (HP\*) (B) (PU) (AC)  
RUNL STETSON 850S (2P) (HB) (PN) (AA)  
RUNL 72L (HP\*) (B) (PU)

IDENT	IMUPB850
DOB	22/04/2006
COLOUR	Homo. Black (Progeny)
HORN	Homo. Polled (by Pedigree)

### 2 x STRAWS - RUNL XTRA LOYAL

RUNL STETSON 850S (2P) (HB) (PN) (AA)  
RUNL XTRA-LOYAL 644 X (HP\*) (HB\*) (PN)  
RUNL 294S (P) (B) (PU)

IDENT	IMUPF141
DOB	10/04/2010
COLOUR	Homo. Black (by DNA test)
HORN	Homo. Polled (by DNA test)

Comments: 1 x Straw Chaz First Choice, 1 x Straw RUNL Stetson & 2 x Straws RUNL Xtra Loyal on offer.

Purchaser: \_\_\_\_\_

Price: \_\_\_\_\_





# Joining Sires



**RPY Paynes Derby**



**RPY Paynes Dillinger**



**Greenwood Canadian Ways**



**RUNL Xtra Loyal**



**Balamore Gryphon**



**Balamore Endeavor**



**Flemington Quiet Achiever**



**Ulster 1 Quarterback**



# BUYER'S INSTRUCTION SLIP

PURCHASER'S NAME: .....  
TRADING NAME: .....  
ADDRESS: ..... POST CODE: .....  
PIC: ..... PHONE: .....  
EMAIL: .....

LOT PURCHASED: ..... PRICE: .....  
LOT PURCHASED: ..... PRICE: .....  
LOT PURCHASED: ..... PRICE: .....  
LOT PURCHASED: ..... PRICE: .....  
LOT PURCHASED: ..... PRICE: .....

TRANSPORT ARRANGEMENTS: .....  
.....

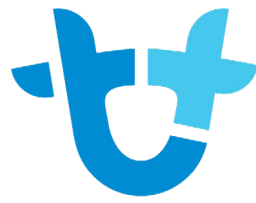
CATTLE TO BE TRANSFERRED TO: .....  
.....

BUYER'S SIGNATURE: ..... DATE: .....

**NO VERBAL INSTRUCTIONS WILL BE ACCEPTED**







# AuctionsPlus

## How to Register and Bid on AuctionsPlus

1

Go to [www.auctionsplus.com.au](http://www.auctionsplus.com.au) to register at least 48 hours before the sale.

2

Select “**Sign Up**” in the top right hand corner.

3

Fill out your name, mobile number, email address and create a password.

4

Go to your emails and confirm the account.

5

Return to AuctionsPlus and log in.

6

Select “**Dashboard**” and then select “**Request Approval to Buy**”.

7

Fill in buyer details and once completed go back to Dashboard.

8

Complete buyer induction module (approx. 30 minutes).

9

AuctionsPlus will email you to let you know that your account has been approved.

10

Log in on sale day and connect to auction.

11

Bid using the two-step process – unlock the bid button and bid at that price.

12

If you are successful, the selling agent will contact you post sale to organise delivery and payment.

For more information please contact us on:

Phone: (02) 9262 4222

Email: [info@auctionsplus.com.au](mailto:info@auctionsplus.com.au)





**346 Wherrol Flat Road,  
Wingham, NSW**

**Paul & Janelle Relf - 0427 915 152**

**Email: [rachel.relf@hotmail.com](mailto:rachel.relf@hotmail.com)**



**Warrigal Limousins**